

## PE/Elab Fluor® 594 Anti-Human CD48 Antibody[156-4H9]

Catalog Number: E-AB-F1061P

Note: Centrifuge before opening to ensure complete recovery of vial contents.

### Description

<b>Reactivity</b>	Human
<b>Host</b>	Mouse
<b>Isotype</b>	Mouse IgG1, κ
<b>Clone No.</b>	156-4H9
<b>Isotype Control</b>	PE/Elab Fluor® 594 Mouse IgG1, κ Isotype Control[MOPC-21] [Product E-AB-F09792P]
<b>Conjugation</b>	PE/Elab Fluor® 594
<b>Conjugation Information</b>	PE/Elab Fluor® 594 is designed to be excited by the blue (488 nm), Green (532 nm) and yellow-green (561 nm) lasers and detected using an optical filter centered near 620 nm (e.g., a 610/20 nm bandpass filter).
<b>Storage Buffer</b>	Phosphate buffered solution, pH 7.2, containing 0.09% sodium azide and 1% BSA.

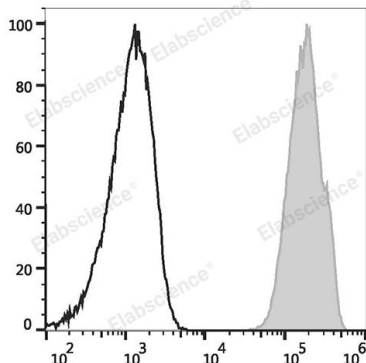
### Applications

### Recommended usage

#### FCM

Each lot of this antibody is quality control tested by flow cytometric analysis. **The amount of the reagent is suggested to be used 5 μL of antibody per test (million cells in 100 μL staining volume or per 100 μL of whole blood).** Please check your vial before the experiment. Since applications vary, the appropriate dilutions must be determined for individual use.

### Data



Human peripheral blood lymphocytes are stained with

PE/Elab Fluor® 594 Anti-Human CD48 Antibody (filled gray histogram) or PE/Elab Fluor® 594 Mouse IgG1 Isotype Control (empty black histogram).

### Preparation & Storage

<b>Storage</b>	Keep as concentrated solution. This product can be stored at 2-8°C for 12 months. Please protected from prolonged exposure to light and do not freeze.
<b>Shipping</b>	Ice bag

### Antigen Information

<b>Alternate Names</b>	BCM1 surface antigen;BLAST-1;CD48;CD48 antigen;Cd48;HM48-1;MRC OX-45 surface antigen;SLAMF2;sgp-60
<b>Uniprot ID</b>	P09326

### For Research Use Only

**Gene ID**

962

**Background**

CD48 is a 40-47 kD GPI-anchored membrane protein, also known as Blast-1 and HuLy-m3. It is a member of the CD2 family that contains 2 IgSF domains and is widely expressed on both resting and activated hematopoietic cells with the exception of granulocytes, platelets, and erythrocytes. CD48 binds to CD2 at a considerably (>100-fold) lower affinity than CD58. It is thought to contribute to T cell activation. The cytoplasmic tail of CD48 has been shown to bind to the kinases Lck and Fyn.