

GLUT-4 Polyclonal Antibody

Catalog Number: E-AB-30268

3 Publications



Note: Centrifuge before opening to ensure complete recovery of vial contents.

Description

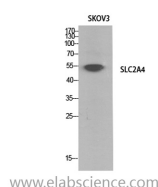
Reactivity	Human, Mouse, Rat
Immunogen	Synthesized peptide derived from the N-terminal region of human Glut4.
Host	Rabbit
Isotype	IgG
Purification	Affinity purification
Formulation	PBS with 0.02% sodium azide, 0.5% protective protein and 50% glycerol pH 7.4.

Applications

Recommended Dilution

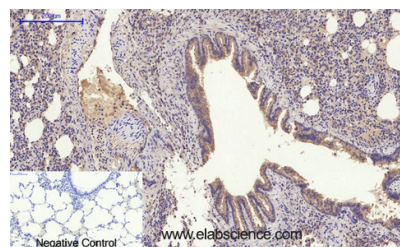
WB	1:500-2000
IHC	1:50-300
ELISA	1:10000-20000

Data

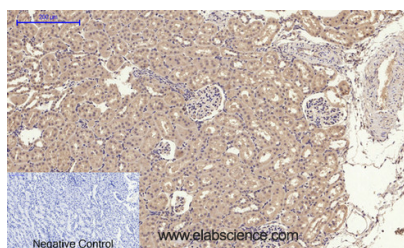


Western Blot analysis of SKOV3 cells using GLUT-4 Polyclonal Antibody at dilution of 1:1000.

Observed MW: 56kDa
Calculated MW: 55kDa



Immunohistochemistry of paraffin-embedded Rat lung tissue using GLUT-4 Polyclonal Antibody at dilution of 1:200.



Immunohistochemistry of paraffin-embedded Rat kidney tissue using GLUT-4 Polyclonal Antibody at dilution of 1:200.

Preparation & Storage

Storage Store at -20°C. Avoid freeze / thaw cycles.

Background

This gene is a member of the solute carrier family 2 (facilitated glucose transporter) family and encodes a protein that functions as an insulin-regulated facilitative glucose transporter. In the absence of insulin, this integral membrane protein is sequestered within the cells of muscle and adipose tissue. Within minutes of insulin stimulation, the protein moves to

For Research Use Only

A Reliable Research Partner in Life Science and Medicine

Toll-free: 1-888-852-8623

Web: www.elabscience.com

Tel: 1-832-243-6086

Email: techsupport@elabscience.com

Fax: 1-832-243-6017

GLUT-4 Polyclonal Antibody

Catalog Number: E-AB-30268

3 Publications



the cell surface and begins to transport glucose across the cell membrane. Mutations in this gene have been associated with noninsulin-dependent diabetes mellitus (NIDDM).

For Research Use Only

A Reliable Research Partner in Life Science and Medicine

Toll-free: 1-888-852-8623

Tel: 1-832-243-6086

Fax: 1-832-243-6017

Web: www.elabscience.com

Email: techsupport@elabscience.com