

MYD88 Polyclonal Antibody

catalog number: **D-AB-10290L**

Note: Centrifuge before opening to ensure complete recovery of vial contents.

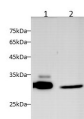
Description

Reactivity	Human;Mouse;Rat
Immunogen	Recombinant Human MYD88 Protein expressed by E.coli
Host	Rabbit
Isotype	IgG
Purification	Antigen Affinity Purification
Buffer	PBS with 0.05% Proclin300, 1% protective protein and 50% glycerol, pH7.4

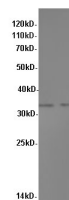
Applications

WB	1:500-1:1000
-----------	--------------

Data



Observed-MW:33 kDa
Calculated-MW:33 kDa



Observed-MW:33 kDa
Calculated-MW:33 kDa

Western blot with MYD88 Polyclonal antibody at dilution of 1:1000.lane 1:Raw264.7 whole cell lysate,lane 2:Mouse lung,lane 3:Rat lung
Western blot with MYD88 Polyclonal antibody at dilution of 1:600.lane 1:HepG2 whole cell lysate,lane 2:K562 whole cell lysate

Preparation & Storage

Storage	Store at -20°C Valid for 12 months. Avoid freeze / thaw cycles.
Shipping	The product is shipped with ice pack,upon receipt,store it immediately at the temperature recommended.

Background

Adapter protein involved in the Toll-like receptor and IL-1 receptor signaling pathway in the innate immune response. Acts via IRAK1,IRAK2,IRF7 and TRAF6,leading to NF-kappa-B activation,cytokine secretion and the inflammatory response. Increases IL-8 transcription. Involved in IL-18-mediated signaling pathway.

For Research Use Only