

## Elab Fluor® 700 Anti-Mouse CD279/PD-1 Antibody[29F.1A12]

Catalog Number: E-AB-F1131M1

**Note:** Centrifuge before opening to ensure complete recovery of vial contents.

### Description

<b>Reactivity</b>	Mouse
<b>Host</b>	Rat
<b>Isotype</b>	Rat IgG2a, κ
<b>Clone No.</b>	29F.1A12
<b>Isotype Control</b>	Elab Fluor® 700 Rat IgG2a, κ Isotype Control[2A3] [Product E-AB-F09832M1]
<b>Conjugation</b>	Elab Fluor® 700
<b>Conjugation Information</b>	Elab Fluor® 700 is designed to be excited by the Red laser (627-640 nm) and detected using an optical filter centered near 719 nm (e.g., a 725/40 nm bandpass filter).
<b>Storage Buffer</b>	Phosphate buffered solution, pH 7.2, containing 0.09% sodium azide and 1% BSA.

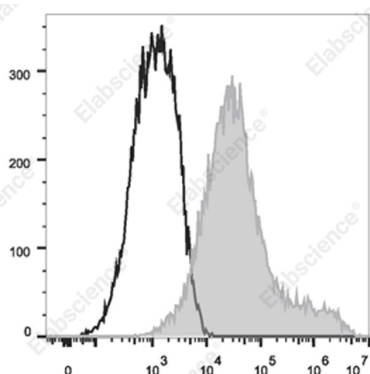
### Applications

### Recommended usage

#### FCM

Each lot of this antibody is quality control tested by flow cytometric analysis. **The amount of the reagent is suggested to be used 5 μL of antibody per test (million cells in 100 μL staining volume or per 100 μL of whole blood).** Please check your vial before the experiment. Since applications vary, the appropriate dilutions must be determined for individual use.

### Data



Staining of the 293T cells transfected with pcDNA3.1 plasmid encoding Mouse CD279/PD-1 gene with Elab Fluor® 700 Anti-Mouse CD279/PD-1 Antibody[29F.1A12](filled gray histogram) or Elab Fluor® 700 Rat IgG2a, κ Isotype Control (empty black histogram). Total viable cells were used for analysis.

### Preparation & Storage

<b>Storage</b>	Keep as concentrated solution. This product can be stored at 2-8°C for 12 months. Please protected from prolonged exposure to light and do not freeze.
<b>Shipping</b>	Ice bag

### Antigen Information

<b>Alternate Names</b>	Programmed Death-1;PD-1
<b>Uniprot ID</b>	Q02242

### For Research Use Only

**Gene ID**

18566

**Background**

CD279, also known as programmed death-1 (PD-1), is a 50-55 kD glycoprotein belonging to the CD28 family of the Ig superfamily. PD-1 is expressed on activated splenic T and B cells and thymocytes. It is induced on activated myeloid cells as well. PD-1 is involved in lymphocyte clonal selection and peripheral tolerance through binding its ligands, B7-H1 (PD-L1) and B7-DC (PD-L2). It has been reported that PD-1 and PD-L1 interactions are critical to positive selection and play a role in shaping the T cell repertoire. PD-L1 negative costimulation is essential for prolonged survival of intratesticular islet allografts.