

FITC Anti-Human CD268 Antibody[11C1]

Catalog Number: AN00316C

Note: Centrifuge before opening to ensure complete recovery of vial contents.

Description

Reactivity	Human
Host	Mouse
Isotype	Mouse IgG1, κ
Clone No.	11C1
Isotype Control	FITC Mouse IgG1, κ Isotype Control[MOPC-21] [Product E-AB-F09792C]
Conjugation	FITC
Conjugation Information	FITC is designed to be excited by the Blue laser (488 nm) and detected using an optical filter centered near 530 nm (e.g., a 525/40 nm bandpass filter).
Storage Buffer	Phosphate buffered solution, pH 7.2, containing 0.09% stabilizer and 1% protein protectant.

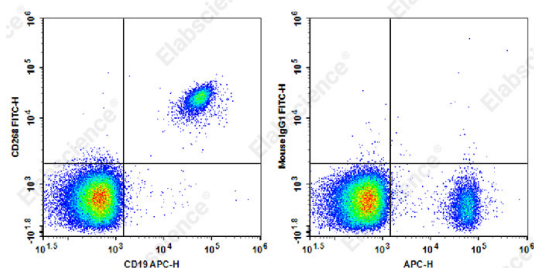
Applications

Recommended usage

FCM

Each lot of this antibody is quality control tested by flow cytometric analysis. **The amount of the reagent is suggested to be used 5 μL of antibody per test (million cells in 100 μL staining volume or per 100 μL of whole blood).** Please check your vial before the experiment. Since applications vary, the appropriate dilutions must be determined for individual use.

Data



Staining of normal human peripheral blood cells with APC Anti-Human CD19 Antibody and FITC Anti-Human CD268 Antibody[11C1] (left) or FITC Mouse IgG1, κ Isotype Control (right). Cells in the lymphocytes gate were used for analysis.

Preparation & Storage

Storage	Keep as concentrated solution. This product can be stored at 2-8°C for 12 months. Please protected from prolonged exposure to light and do not freeze.
Shipping	Ice bag

Antigen Information

Alternate Names	TNFRSF13C;BAFF-R;BAFFR;BR3;BAFF Receptor
Uniprot ID	Q96RJ3
Gene ID	115650

For Research Use Only

Background

B cell-activating factor receptor (BAFF-R) is a 19 kD type III membrane protein. It belongs to TNFR superfamily, also known as TNFRSF member 13C (TNFRSF13C), BAFF receptor 3 (BR3), or CD268. BAFF-R is expressed on mature B cells, B cell lymphoma, and T cell subset. BAFF-R is the major receptor for BAFF/BLys (or TALL-1, THANK) which binds to TACI and BCMA as well. The interaction of BAFF with BAFF-R promotes NF- κ B activation and plays predominant roles in B-cell maturation and survival as well as costimulates T cell activation and proliferation. TRAF3 is a BAFF-R intracellularly associated protein, which negatively regulates BAFF-R-mediated NF- κ B activation.

For Research Use Only