

ETFB Polyclonal Antibody

catalog number: E-AB-19544

Note: Centrifuge before opening to ensure complete recovery of vial contents.

Description

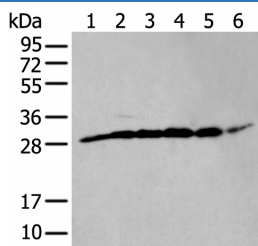
Reactivity	Human;Mouse;Rat
Immunogen	Synthetic peptide of human ETFB
Host	Rabbit
Isotype	IgG
Purification	Antigen affinity purification
Conjugation	Unconjugated
Buffer	Phosphate buffered solution, pH 7.4, containing 0.05% stabilizer and 50% glycerol.

Applications

Recommended Dilution

WB	1:500-1:2000
IHC	1:30-1:150

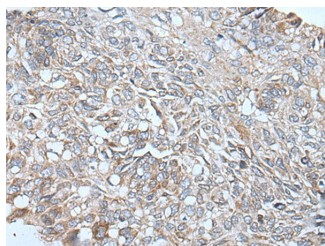
Data



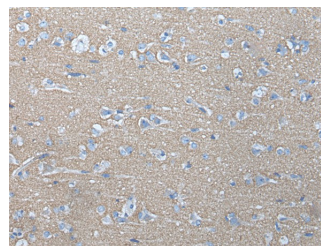
Western blot analysis of PC-3 cell mouse skeletal muscle tissue mouse brain tissue human heart tissue Hela and HEPG2 cell lysates using ETFB Polyclonal Antibody at dilution of 1:400

Observed-MW:Refer to figures

Calculated-MW:28 kDa



Immunohistochemistry of paraffin-embedded Human lung cancer tissue using ETFB Polyclonal Antibody at dilution of 1:40(×200)



Immunohistochemistry of paraffin-embedded Human brain tissue using ETFB Polyclonal Antibody at dilution of 1:40(×200)

Preparation & Storage

Storage	Store at -20°C Valid for 12 months. Avoid freeze / thaw cycles.
Shipping	The product is shipped with ice pack,upon receipt,store it immediately at the temperature recommended.

Background

For Research Use Only

This gene encodes electron-transfer-flavoprotein, beta polypeptide, which shuttles electrons between primary flavoprotein dehydrogenases involved in mitochondrial fatty acid and amino acid catabolism and the membrane-bound electron transfer flavoprotein ubiquinone oxidoreductase. The gene deficiencies have been implicated in type II glutaricaciduria. Alternatively spliced transcript variants have been found for this gene.