

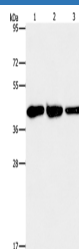
## GOT1 Polyclonal Antibody

catalog number: E-AB-14773

**Note:** Centrifuge before opening to ensure complete recovery of vial contents.

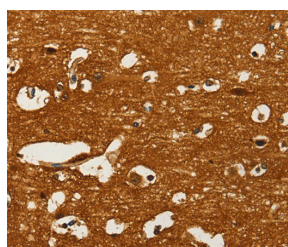
| Description  |  |
|--------------|--|
| Reactivity   | Human;Mouse;Rat  |
| Immunogen    | Recombinant protein of human GOT1  |
| Host         | Rabbit   |
| Isotype      | IgG  |
| Purification | Affinity purification  |
| Conjugation  | Unconjugated   |
| Buffer       | Phosphate buffered solution, pH 7.4, containing 0.05% stabilizer and 50% glycerol. |
| Applications | Recommended Dilution   |
| WB           | 1:1000-1:5000  |
| IHC          | 1:50-1:200   |

## Data

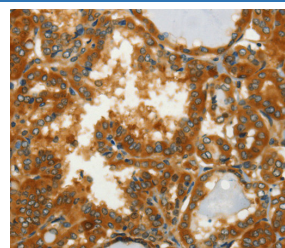


Western Blot analysis of Human normal liver tissue, Mouse brain and heart tissue using GOT1 Polyclonal Antibody at dilution of 1:1600

**Calculated-MW:46 kDa**



Immunohistochemistry of paraffin-embedded Human brain using GOT1 Polyclonal Antibody at dilution of 1:50



Immunohistochemistry of paraffin-embedded Human thyroid cancer using GOT1 Polyclonal Antibody at dilution of 1:50

| Preparation & Storage |  |
|-----------------------|--|
| Storage               | Store at -20°C Valid for 12 months. Avoid freeze / thaw cycles.  |
| Shipping              | The product is shipped with ice pack, upon receipt, store it immediately at the temperature recommended. |

| Background  |  |
|---|--|
| <p>Glutamic-oxaloacetic transaminase is a pyridoxal phosphate-dependent enzyme which exists in cytoplasmic and mitochondrial forms, GOT1 and GOT2, respectively. GOT plays a role in amino acid metabolism and the urea and tricarboxylic acid cycles. The two enzymes are homodimeric and show close homology.</p> |  |

## For Research Use Only