

# Recombinant Rat CD38/ADPRC1 protein (His tag)

Catalog Number:PDER100072



**Note:** Centrifuge before opening to ensure complete recovery of vial contents.

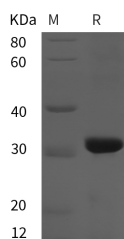
## Description

<b>Synonyms</b>	17-1A;323/A3;ACSTD1;CD326;EGP-2;EGP314;EGP40;EpCAM;MOC31;TACST-1;TACSTD1;TROP1;
<b>Species</b>	Rat
<b>Expression Host</b>	E.coli
<b>Sequence</b>	Trp 45-Val 303
<b>Accession</b>	Q64244
<b>Calculated Molecular Weight</b>	28.4 kDa
<b>Observed molecular weight</b>	32 kDa
<b>Tag</b>	N-His

## Properties

<b>Purity</b>	> 95 % as determined by reducing SDS-PAGE.
<b>Endotoxin</b>	Please contact us for more information.
<b>Storage</b>	Generally, lyophilized proteins are stable for up to 12 months when stored at -20 to -80°C. Reconstituted protein solution can be stored at 4-8°C for 2-7 days. Aliquots of reconstituted samples are stable at < -20°C for 3 months.
<b>Shipping</b>	This product is provided as lyophilized powder which is shipped with ice packs.
<b>Formulation</b>	Lyophilized from sterile PBS, pH 7.4. Normally 5 % - 8 % trehalose, mannitol and 0.01% Tween80 are added as protectants before lyophilization. Please refer to the specific buffer information in the printed manual.
<b>Reconstitution</b>	Please refer to the printed manual for detailed information.

## Data



> 95 % as determined by reducing SDS-PAGE.

## Background

Epithelial Cellular Adhesion Molecule (Ep-CAM), also known as EGP314, mEGP314, Protein 289A, Tumor-associated calcium signal transducer 1, CD326, belongs to the EPCAM family. Its' monomer subunit structure interacts with phosphorylated CLDN7. Ep-CAM may act as a physical homophilic interaction molecule between intestinal epithelial cells (IECs) and intraepithelial lymphocytes (IELs) at the mucosal epithelium for providing immunological barrier as a first line of defense against mucosal infection. It plays a role in embryonic stem cells proliferation and differentiation. It also up-regulates the expression of FABP5, MYC and cyclins A and E. The post-translational modification glycosylation at Asn-198 is crucial for protein stability.

## For Research Use Only

A Reliable Research Partner in Life Science and Medicine

Toll-free: 1-888-852-8623

Web: [www.elabscience.com](http://www.elabscience.com)

Tel: 1-832-243-6086

Email: [techsupport@elabscience.com](mailto:techsupport@elabscience.com)

Fax: 1-832-243-6017