

DNASE1L1 Polyclonal Antibody

catalog number: **E-AB-66014**

Note: Centrifuge before opening to ensure complete recovery of vial contents.

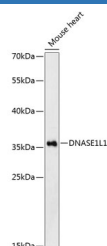
Description

Reactivity	Mouse;Rat
Immunogen	Recombinant fusion protein of human DNASE1L1 (NP_006721.1).
Host	Rabbit
Isotype	IgG
Purification	Affinity purification
Buffer	Phosphate buffered solution, pH 7.4, containing 0.05% stabilizer and 50% glycerol.

Applications

Applications	Recommended Dilution
WB	1:500-1:2000
IF	1:50-1:200

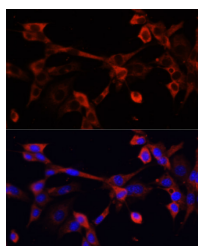
Data



Western blot analysis of extracts of Mouse heart using DNASE1L1 Polyclonal Antibody at dilution of 1:3000.

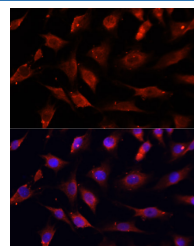
Observed-MW:34 kDa

Calculated-MW:33 kDa



Immunofluorescence analysis of NIH/3T3 cells using DNASE1L1 Polyclonal Antibody at dilution of 1:100. Blue:

DAPI for nuclear staining.



Immunofluorescence analysis of C6 cells using DNASE1L1 Polyclonal Antibody at dilution of 1:100. Blue: DAPI for nuclear staining.

Preparation & Storage

Storage	Store at -20°C Valid for 12 months. Avoid freeze / thaw cycles.
Shipping	The product is shipped with ice pack, upon receipt, store it immediately at the temperature recommended.

Background

This gene encodes a deoxyribonuclease protein that shows high sequence similarity to DNase I. The encoded protein is localized to the endoplasmic reticulum and modified by N-linked glycosylation. Alternate transcriptional splice variants encoding the same protein have been observed.

For Research Use Only