

## FGL1 Polyclonal Antibody

catalog number: **E-AB-10321**

**Note:** Centrifuge before opening to ensure complete recovery of vial contents.

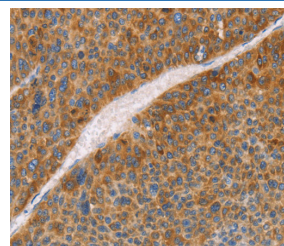
### Description

|                     |  |
|---------------------|--|
| <b>Reactivity</b>   | Human;Mouse;Rat  |
| <b>Immunogen</b>    | Recombinant protein of human FGL1  |
| <b>Host</b>         | Rabbit   |
| <b>Isotype</b>      | IgG  |
| <b>Purification</b> | Affinity purification  |
| <b>Buffer</b>       | Phosphate buffered solution, pH 7.4, containing 0.05% stabilizer and 50% glycerol. |

### Applications

| Applications | Recommended Dilution |
|--------------|----------------------|
| <b>WB</b>    | 1:500-1:2000         |
| <b>IHC</b>   | 1:50-1:200           |

### Data



Western Blot analysis of Human fetal liver tissue using FGL1 Polyclonal Antibody at dilution of 1:500  
Calculated-MW:36 kDa

Immunohistochemistry of paraffin-embedded Human liver cancer using FGL1 Polyclonal Antibody at dilution of 1:50

### Preparation & Storage

|                 |  |
|-----------------|--|
| <b>Storage</b>  | Store at -20°C Valid for 12 months. Avoid freeze / thaw cycles.  |
| <b>Shipping</b> | The product is shipped with ice pack, upon receipt, store it immediately at the temperature recommended. |

### Background

Fibrinogen-like 1 is a member of the fibrinogen family. This protein is homologous to the carboxy terminus of the fibrinogen beta- and gamma- subunits which contains the four conserved cysteines of fibrinogens and fibrinogen related proteins. However, this protein lacks the platelet-binding site, cross-linking region and a thrombin-sensitive site which are necessary for fibrin clot formation. This protein may play a role in the development of hepatocellular carcinomas. Four alternatively spliced transcript variants encoding the same protein exist for this gene.

### For Research Use Only