

Recombinant Rat SDF-1/CXCL12 Protein (GST Tag)

Catalog Number: PDER100189

Note: Centrifuge before opening to ensure complete recovery of vial contents.

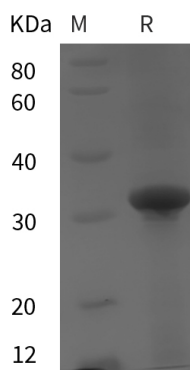
Description

Species	Rat
Source	E.coli-derived Rat SDF-1 protein Gly21-Lys89, with an N-terminal GST
Calculated MW	32.5 kDa
Observed MW	35 kDa
Accession	Q9QZD1
Bio-activity	Not validated for activity

Properties

Purity	> 95% as determined by reducing SDS-PAGE.
Endotoxin	< 10 EU/mg of the protein as determined by the LAL method
Storage	Generally, lyophilized proteins are stable for up to 12 months when stored at -20 to -80°C. Reconstituted protein solution can be stored at 4-8°C for 2-7 days. Aliquots of reconstituted samples are stable at < -20°C for 3 months.
Shipping	This product is provided as lyophilized powder which is shipped with ice packs.
Formulation	Lyophilized from a 0.2 µm filtered solution in PBS with 5% Trehalose and 5% Mannitol.
Reconstitution	It is recommended that sterile water be added to the vial to prepare a stock solution of 0.5 mg/mL. Concentration is measured by UV-Vis.

Data



SDS-PAGE analysis of Rat SDF-1/CXCL12 proteins, 2 µg/lane of Recombinant Rat SDF-1/CXCL12 proteins was resolved with SDS-PAGE under reducing conditions, showing bands at 35 kDa.

Background

CXCL12, also known as SDF-1, is a CXC chemokine that interacts with CXCR4. SDF-1 alpha and SDF-1 beta are alternatively spliced isoforms of CXCL12. SDF-1 beta has an additional 4 amino acids at the carboxy-terminus.

For Research Use Only

Toll-free: 1-888-852-8623
Web: www.elabscience.com

Tel: 1-832-243-6086
Email: techsupport@elabscience.com

Fax: 1-832-243-6017