

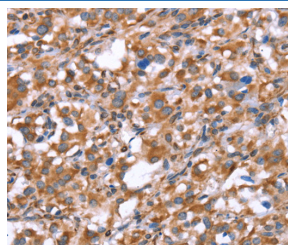
GPC6 Polyclonal Antibody

catalog number: E-AB-13271

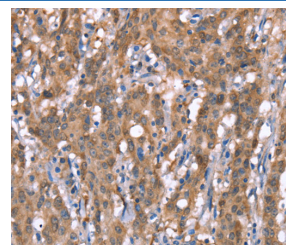
Note: Centrifuge before opening to ensure complete recovery of vial contents.

Description	
Reactivity	Human;Mouse
Immunogen	Synthetic peptide of human GPC6
Host	Rabbit
Isotype	IgG
Purification	Affinity purification
Conjugation	Unconjugated
Buffer	Phosphate buffered solution, pH 7.4, containing 0.05% stabilizer and 50% glycerol.
Applications	Recommended Dilution
IHC	1:50-1:200

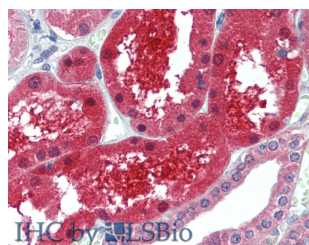
Data



Immunohistochemistry of paraffin-embedded Human thyroid cancer tissue using GPC6 Polyclonal Antibody at dilution 1:40



Immunohistochemistry of paraffin-embedded Human gastric cancer tissue using GPC6 Polyclonal Antibody at dilution 1:40



Immunohistochemistry of paraffin-embedded Kidney tissue using GPC6 Polyclonal Antibody at dilution of 1:100(Elabscience Product Detected by Lifespan).

Preparation & Storage	
Storage	Store at -20°C Valid for 12 months. Avoid freeze / thaw cycles.
Shipping	The product is shipped with ice pack, upon receipt, store it immediately at the temperature recommended.

Background

The glypicans comprise a family of glycosylphosphatidylinositol-anchored heparan sulfate proteoglycans, and they have been implicated in the control of cell growth and cell division. The glypican encoded by this gene is a putative cell surface coreceptor for growth factors, extracellular matrix proteins, proteases and anti-proteases.

For Research Use Only