

# Claudin 1 Polyclonal Antibody

catalog number: E-AB-15674

**Note:** Centrifuge before opening to ensure complete recovery of vial contents.

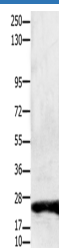
## Description

<b>Reactivity</b>	Human;Mouse;Rat
<b>Immunogen</b>	Synthetic peptide of human CLDN1
<b>Host</b>	Rabbit
<b>Isotype</b>	IgG
<b>Purification</b>	Affinity purification
<b>Conjugation</b>	Unconjugated
<b>buffer</b>	Phosphate buffered solution, pH 7.4, containing 0.05% stabilizer and 50% glycerol.

## Applications

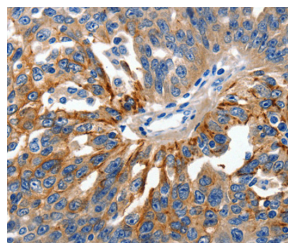
Applications	Recommended Dilution
<b>WB</b>	1:2000-1:5000
<b>IHC</b>	1:100-1:300

## Data

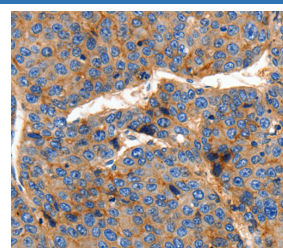


Western Blot analysis of Hela cell using Claudin 1 Polyclonal Antibody at dilution of 1:1900

**Calculated-MV:23 kDa**



Immunohistochemistry of paraffin-embedded Human ovarian cancer using Claudin 1 Polyclonal Antibody at dilution of 1:150



Immunohistochemistry of paraffin-embedded Human liver cancer using Claudin 1 Polyclonal Antibody at dilution of 1:150

## Preparation & Storage

<b>Storage</b>	Store at -20°C Valid for 12 months. Avoid freeze / thaw cycles.
<b>Shipping</b>	The product is shipped with ice pack, upon receipt, store it immediately at the temperature recommended.

## Background

Tight junctions represent one mode of cell-to-cell adhesion in epithelial or endothelial cell sheets, forming continuous seals around cells and serving as a physical barrier to prevent solutes and water from passing freely through the paracellular space. These junctions are comprised of sets of continuous networking strands in the outwardly facing cytoplasmic leaflet, with complementary grooves in the inwardly facing extracytoplasmic leaflet. The protein encoded by this gene, a member of the claudin family, is an integral membrane protein and a component of tight junction strands. Loss of function mutations result in neonatal ichthyosis-sclerosing cholangitis syndrome.

## For Research Use Only