

Recombinant Human SUMF1 Protein (His Tag)

Catalog Number: PKSH033084

Note: Centrifuge before opening to ensure complete recovery of vial contents.

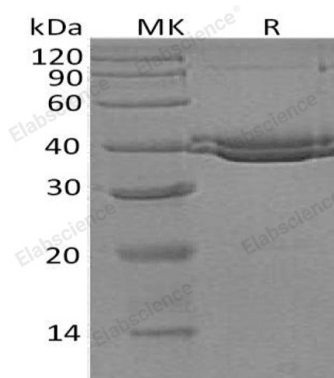
Description

| | |
|---------------------|----------------------------|
| Species | Human |
| Mol_Mass | 38.4 kDa |
| Accession | Q8NBK3 |
| Bio-activity | Not validated for activity |

Properties

| | |
|-----------------------|--|
| Purity | > 95 % as determined by reducing SDS-PAGE. |
| Endotoxin | < 1.0 EU per µg of the protein as determined by the LAL method. |
| Storage | Store at < -20°C, stable for 6 months. Please minimize freeze-thaw cycles. |
| Shipping | This product is provided as liquid. It is shipped at frozen temperature with blue ice/gel packs. Upon receipt, store it immediately at < - 20°C. |
| Formulation | Supplied as a 0.2 µm filtered solution of 20mM Tris-HCl, 150mM NaCl, 2mM CaCl ₂ , 10% Glycerol, pH 7.5. |
| Reconstitution | Not Applicable |

Data



> 95 % as determined by reducing SDS-PAGE.

Background

Human Sulfatase Modifying Factor 1 (SUMF1) is a 42kDa protein. SUMF1 is a Ca²⁺-binding member of the sulfatase-modifying factor family. SUMF1 is a soluble ER luminal glycoprotein, it converts inactive sulfatases into an active form by transforming a catalytic site cysteine into a formylglycine residue. In the ER, SUMF1 can exist as either a monomer, or a disulfide-linked homodimer or a heterodimer with SUMF2. Three splice isoforms are known.

For Research Use Only