

Recombinant Human CLEC4E/Mincel Protein (His Tag)



Catalog Number: PKSH032258

Note: Centrifuge before opening to ensure complete recovery of vial contents.

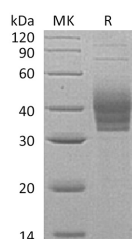
Description

Synonyms	C-Type Lectin Domain Family 4 Member E; C-Type Lectin Superfamily Member 9; Macrophage-Inducible C-Type Lectin; CLEC4E; CLECSF9; MINCLE
Species	Human
Expression Host	HEK293 Cells
Sequence	Arg41-Leu219
Accession	Q9ULY5
Calculated Molecular Weight	21.7 kDa
Observed molecular weight	26 kDa
Tag	C-His

Properties

Purity	> 90 % as determined by reducing SDS-PAGE.
Endotoxin	< 1.0 EU per µg of the protein as determined by the LAL method.
Storage	Generally, lyophilized proteins are stable for up to 12 months when stored at -20 to -80°C. Reconstituted protein solution can be stored at 4-8°C for 2-7 days. Aliquots of reconstituted samples are stable at < -20°C for 3 months.
Shipping	This product is provided as lyophilized powder which is shipped with ice packs.
Formulation	Lyophilized from a 0.2 µm filtered solution of 20mM PB, 150mM NaCl, pH 7.4. Normally 5 % - 8 % trehalose, mannitol and 0.01 % Tween80 are added as protectants before lyophilization. Please refer to the specific buffer information in the printed manual
Reconstitution	Please refer to the printed manual for detailed information.

Data



> 90 % as determined by reducing SDS-PAGE.

Background

C-Type Lectin Domain Family 4 Member E (CLEC4E) is a 219 amino acid single-pass type II membrane protein that contains one C-type Lectin domain. It is expressed in monocytes, CLEC4E functions as a downstream target of C/EBP β and is thought to play a role in the inflammatory response, possibly via transcriptional control of C/EBP β . CLEC4E may play a role in the response to inflammatory stimuli in peritoneal macrophages and may be involved in immune surveillance processes under transcriptional control of CEBPB. Human CLEC4E shares 67% sequence identity with its mouse counterpart, suggesting a similar function between species. CLEC-4E exists as multiple alternatively spliced isoforms that are encoded by a gene which maps to a natural killer gene complex region on human chromosome 12.

For Research Use Only

A Reliable Research Partner in Life Science and Medicine

Toll-free: 1-888-852-8623

Web: www.elabscience.com

Tel: 1-832-243-6086

Email: techsupport@elabscience.com

Fax: 1-832-243-6017