

beta actin Monoclonal Antibody

catalog number: E-AB-48018

Note: Centrifuge before opening to ensure complete recovery of vial contents.

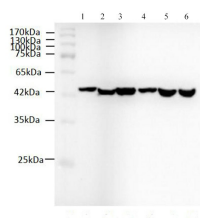
Description

Reactivity	Human;Mouse;Rat;Zebrafish
Immunogen	Recombinant human Beta actin protein
Host	Mouse
Isotype	IgG2a
Clone	2B2
Purification	Protein A/G Purification
Conjugation	Unconjugated
buffer	PBS with 0.05% proclin 300, 1% protective protein and 50% glycerol,pH7.4

Applications

Applications	Recommended Dilution
WB	1:1000-2000
IF	1:100-200

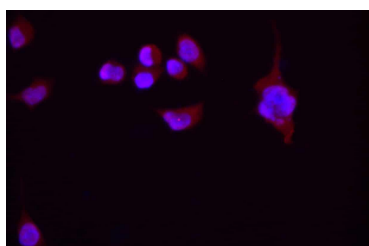
Data



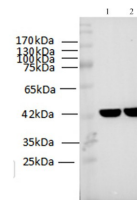
Western Blotting of cell/tissue lysates with anti-Beta Actin monoclonal antibody at dilution of 1:2000. Lane1: PANC-1 cell lysates, Lane2: 293F cell lysates, Lane3: Human placenta lysates, Lane4: Mouse SP2/0 cell lysates, Lane5: Mouse kidney lysates.

Observed-MV:43 kDa

Calculated-MV:43 kDa



Immunofluorescence analysis of 293 cells with anti-beta actin monoclonal antibody at 1:100 dilution.



Western blotting of Zebrafish lysates with anti-Beta Actin monoclonal antibody at dilution of 1:2000.

Observed-MV:43 kDa

Calculated-MV:43 kDa

Preparation & Storage

Storage	Store at -20°C Valid for 12 months. Avoid freeze / thaw cycles.
Shipping	The product is shipped with ice pack,upon receipt,store it immediately at the temperature recommended.

Background

For Research Use Only

beta actin Monoclonal Antibody

catalog number: E-AB-48018



Beta-actin (ACTB/ACTB) is one of six different actin isoforms in humans. Actins are highly conserved proteins that are involved in cell motility, structure and integrity. Beta actin is a major constituent of the contractile apparatus and one of the two nonmuscle cytoskeletal actins. Beta-actin gene is stably and constitutively expressed at high levels in most tissues and cells, and commonly used as a loading control for western blot and as a control for qPCR.

For Research Use Only

A Reliable Research Partner in Life Science and Medicine
Tel: 400-999-2100

Email: techsupport@elabscience.cn

Web: www.elabscience.cn

Rev. V1.9