

# ABCB5 Monoclonal Antibody

catalog number: E-AB-22032

**Note:** Centrifuge before opening to ensure complete recovery of vial contents.

## Description

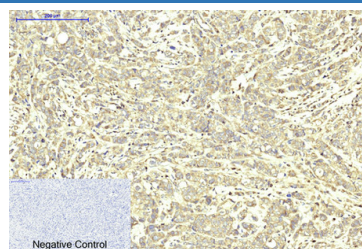
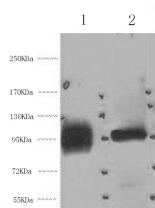
<b>Reactivity</b>	Human
<b>Immunogen</b>	Synthetic Peptide
<b>Host</b>	Mouse
<b>Isotype</b>	IgG
<b>Clone</b>	7L3
<b>Purification</b>	Protein A purification
<b>Conjugation</b>	Unconjugated
<b>buffer</b>	Phosphate buffered solution, pH 7.4, containing 0.05% stabilizer, 0.5% protein protectant and 50% glycerol.

## Applications

## Recommended Dilution

<b>WB</b>	1:500-1:3000
<b>IHC</b>	1:50-1:300
<b>IF</b>	1:100-1:300

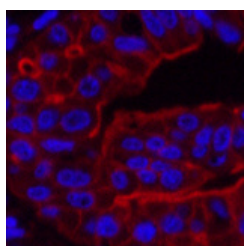
## Data



Western Blot analysis of 1) HeLa, 2) 293T cells using ABCB5 Monoclonal Antibody at dilution of 1:2000.

Immunohistochemistry of paraffin-embedded Human breast cancer tissue using ABCB5 Monoclonal Antibody at dilution of 1:200.

**Observed-MV:90 kDa**  
**Calculated-MV:90 kDa**



Immunofluorescence analysis of Human liver cancer tissue using ABCB5 Monoclonal Antibody at dilution of 1:200.

## Preparation & Storage

<b>Storage</b>	Store at -20°C Valid for 12 months. Avoid freeze / thaw cycles.
<b>Shipping</b>	The product is shipped with ice pack, upon receipt, store it immediately at the temperature recommended.

## Background

ABCB5 belongs to the ATP-binding cassette (ABC) transporter superfamily of integral membrane proteins. These proteins participate in ATP-dependent transmembrane transport of structurally diverse molecules ranging from small ions, sugars, and peptides to more complex organic molecules.

## For Research Use Only