

MAP2 Polyclonal Antibody

catalog number: E-AB-70055

Note: Centrifuge before opening to ensure complete recovery of vial contents.

Description

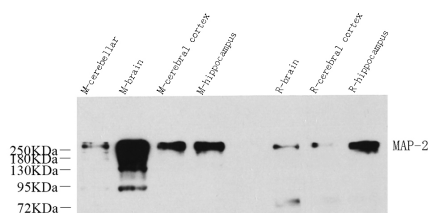
Reactivity	Mouse;Rat
Immunogen	KLH conjugated Synthetic peptide corresponding to Mouse MAP2
Host	Rabbit
Isotype	IgG
Purification	Affinity purification
Conjugation	Unconjugated
buffer	Phosphate buffered solution, pH 7.4, containing 0.05% stabilizer, 1% protein protectant and 50% glycerol.

Applications

WB	1:500-1:2000
-----------	--------------

Recommended Dilution

Data



Western Blot analysis of various samples using MAP2 Polyclonal Antibody at dilution of 1:1000.

Observed-MV:280 kDa

Calculated-MV:70/280 kDa

Preparation & Storage

Storage	Store at -20°C Valid for 12 months. Avoid freeze / thaw cycles.
Shipping	The product is shipped with ice pack, upon receipt, store it immediately at the temperature recommended.

Background

The exact function of MAP2 is unknown but MAPs may stabilize the microtubules against depolymerization. They also seem to have a stiffening effect on microtubules. It contains 3 Tau/MAP repeats. Phosphorylated at serine residues in K-X-G-S motifs by causing MAP/microtubule affinity-regulating kinase (MARK1 or MARK2), detachment from microtubules, and their disassembly.

For Research Use Only