

GTF2H2C Polyclonal Antibody

catalog number: E-AB-65514

Note: Centrifuge before opening to ensure complete recovery of vial contents.

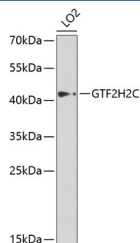
Description

Reactivity	Human; Rat
Immunogen	Recombinant fusion protein of human GTF2H2C (NP_001092198.1).
Host	Rabbit
Isotype	IgG
Purification	Affinity purification
Buffer	Phosphate buffered solution, pH 7.4, containing 0.05% stabilizer and 50% glycerol.

Applications

Applications	Recommended Dilution
WB	1:200-1:2000
IHC	1:50-1:200

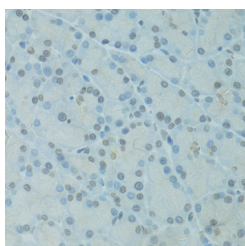
Data



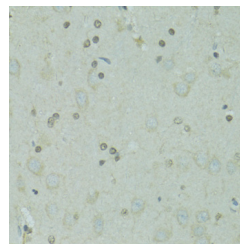
Western blot analysis of extracts of LO2 cells using GTF2H2C Polyclonal Antibody at dilution of 1:1000.

Observed-MW:44 kDa

Calculated-MW:44 kDa



Immunohistochemistry of paraffin-embedded Rat pancreas using GTF2H2C Polyclonal Antibody at dilution of 1:100 (40x lens).



Immunohistochemistry of paraffin-embedded Rat brain using GTF2H2C Polyclonal Antibody at dilution of 1:100 (40x lens).

Preparation & Storage

Storage	Store at -20°C Valid for 12 months. Avoid freeze / thaw cycles.
Shipping	The product is shipped with ice pack, upon receipt, store it immediately at the temperature recommended.

Background

For Research Use Only

GTF2H2C (GTF2H2 Family Member C) is a Protein Coding gene. Diseases associated with GTF2H2C include Spinal Muscular Atrophy, Type Iv and Spinal Muscular Atrophy, Type Iii. Among its related pathways are RNA Polymerase II Transcription Initiation And Promoter Clearance and Nucleotide excision repair. An important paralog of this gene is GTF2H2.