

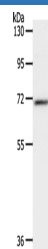
SOX-13 Polyclonal Antibody

catalog number: E-AB-12877

Note: Centrifuge before opening to ensure complete recovery of vial contents.

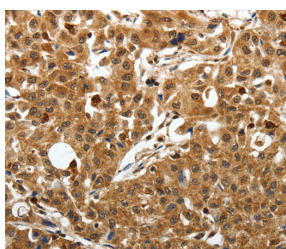
Description	
Reactivity	Human;Mouse
Immunogen	Synthetic peptide of human SOX13
Host	Rabbit
Isotype	IgG
Purification	Affinity purification
Conjugation	Unconjugated
Buffer	Phosphate buffered solution, pH 7.4, containing 0.05% stabilizer and 50% glycerol.
Applications	Recommended Dilution
WB	1:500-1:2000
IHC	1:50-1:200

Data

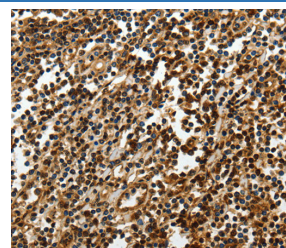


Western Blot analysis of Mouse liver tissue using SOX-13 Polyclonal Antibody at dilution of 1:800

Calculated-MW:69 kDa



Immunohistochemistry of paraffin-embedded Human lung cancer using SOX-13 Polyclonal Antibody at dilution of 1:50



Immunohistochemistry of paraffin-embedded Human tonsil using SOX-13 Polyclonal Antibody at dilution of 1:50

Preparation & Storage	
Storage	Store at -20°C Valid for 12 months. Avoid freeze / thaw cycles.
Shipping	The product is shipped with ice pack, upon receipt, store it immediately at the temperature recommended.

Background

This gene encodes a member of the SOX (SRY-related HMG-box) family of transcription factors involved in the regulation of embryonic development and in the determination of cell fate. The encoded protein may act as a transcriptional regulator after forming a protein complex with other proteins. It has also been determined to be a type-1 diabetes autoantigen, also known as islet cell antibody 12.

For Research Use Only