

# Recombinant Mouse CD117/c-kit Protein(Fc Tag)

Catalog Number: PDMM100160



**Note:** Centrifuge before opening to ensure complete recovery of vial contents.

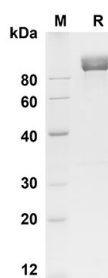
## Description

<b>Species</b>	Mouse
<b>Source</b>	Mammalian-derived Mouse CD117/c-kit proteins Ser25-Pro527,with an C-terminal Fc
<b>Mol_Mass</b>	80.2 kDa
<b>Accession</b>	P05532
<b>Bio-activity</b>	Not validated for activity

## Properties

<b>Purity</b>	> 90% as determined by reducing SDS-PAGE.
<b>Endotoxin</b>	< 1.0 EU/mg of the protein as determined by the LAL method
<b>Storage</b>	Generally, lyophilized proteins are stable for up to 12 months when stored at -20 to -80 °C. Reconstituted protein solution can be stored at 4-8°C for 2-7 days. Aliquots of reconstituted samples are stable at < -20°C for 3 months.
<b>Shipping</b>	This product is provided as lyophilized powder which is shipped with ice packs.
<b>Formulation</b>	Lyophilized from a 0.2 µm filtered solution in PBS with 5% Trehalose and 5% Mannitol.
<b>Reconstitution</b>	It is recommended that sterile water be added to the vial to prepare a stock solution of 0.5 mg/mL. Concentration is measured by UV-Vis.

## Data



SDS-PAGE analysis of Mouse CD117/c-kit proteins ,  
2µg/lane of Recombinant Mouse CD117/c-kit proteins was  
resolved with SDS-PAGE under reducing conditions ,  
showing bands at 90 KD

## Background

### For Research Use Only

A Reliable Research Partner in Life Science and Medicine  
Tel:400-999-2100

Email:[techsupport@elabscience.cn](mailto:techsupport@elabscience.cn)

Web:[www.elabscience.cn](http://www.elabscience.cn)

Rev. V1.5

# Recombinant Mouse CD117/c-kit Protein(Fc Tag)

Catalog Number: PDMM100160



C-Kit is a type 3 transmembrane receptor for MGF (mast cell growth factor , also known as stem cell factor). c-Kit contains 5 Ig-like C2-type (immunoglobulin-like) domains and 1 protein kinase domain. It belongs to the protein kinase superfamily , tyr protein kinase family , and CSF-1/PDGF receptor subfamily. C-Kit has tyrosine-protein kinase activity. Binding of the ligands leads to the autophosphorylation of KIT and its association with substrates such as phosphatidylinositol 3-kinase. Antibodies to c-Kit are widely used in immunohistochemistry to help distinguish particular types of tumor in histological tissue sections. It is used primarily in the diagnosis of GISTs. In GISTs , c-Kit staining is typically cytoplasmic , with stronger accentuation along the cell membranes. C-Kit antibodies can also be used in the diagnosis of mast cell tumors and in distinguishing seminomas from embryonal carcinomas. Mutations in the c-Kit gene are associated with gastrointestinal stromal tumors , mast cell disease , acute myelogenous leukemia , and piebaldism. Defects in KIT are a cause of acute myelogenous leukemia (AML). AML is a malignant disease in which hematopoietic precursors are arrested in an early stage of development. Note=Somatic mutations that lead to constitutive activation of KIT are detected in AML patients.

## For Research Use Only

A Reliable Research Partner in Life Science and Medicine  
Tel:400-999-2100

Email:[techsupport@elabscience.cn](mailto:techsupport@elabscience.cn)

Web:[www.elabscience.cn](http://www.elabscience.cn)

Rev. V1.5