

Recombinant Cytokeratin 5 Monoclonal Antibody

catalog number: **AN301017L**

Note: Centrifuge before opening to ensure complete recovery of vial contents.

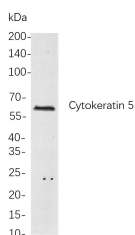
Description

Reactivity	Human;Mouse;Rat
Immunogen	Recombinant Human Cytokeratin 5 protein
Host	Rabbit
Isotype	IgG, κ
Clone	B768
Purification	Protein A
Buffer	PBS, 50% glycerol, 0.05% Proclin 300, 0.05% protein protectant.

Applications Recommended Dilution

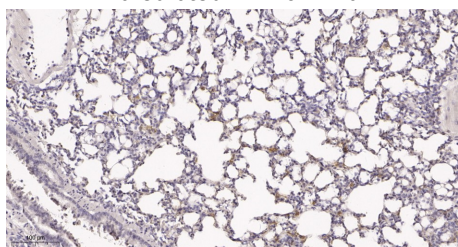
IHC	1:200-1:1000
WB	1:1000-1:5000
IF	1:200-1:1000
ELISA	1:5000-1:20000

Data

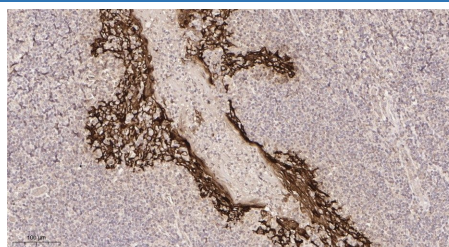


Western Blot with Recombinant Cytokeratin 5 Monoclonal Antibody at dilution of 1:1000 dilution. Lane A: HaCat cells.

Observed-MW:62 kDa
Calculated-MW:62 kDa



Immunohistochemistry of paraffin-embedded mouse lung tissue using Recombinant Cytokeratin 5 Monoclonal Antibody at dilution of 1:200.



Immunohistochemistry of paraffin-embedded human tonsil tissue using Recombinant Cytokeratin 5 Monoclonal Antibody at dilution of 1:200.

Preparation & Storage

Storage	Store at -20°C Valid for 12 months. Avoid freeze / thaw cycles.
Shipping	Ice bag

Background

For Research Use Only

Toll-free: 1-888-852-8623
Web: www.elabscience.com

Tel: 1-832-243-6086
Email: techsupport@elabscience.com

Fax: 1-832-243-6017

Rev. V1.2

KRT5(keratin 5) Homo sapiens The protein encoded by this gene is a member of the keratin gene family. The type II cytokeratins consist of basic or neutral proteins which are arranged in pairs of heterotypic keratin chains coexpressed during differentiation of simple and stratified epithelial tissues. This type II cytokeratin is specifically expressed in the basal layer of the epidermis with family member KRT14. Mutations in these genes have been associated with a complex of diseases termed epidermolysis bullosa simplex. The type II cytokeratins are clustered in a region of chromosome 12q12-q13.