

CEP164 Polyclonal Antibody

catalog number: **E-AB-63983**

Note: Centrifuge before opening to ensure complete recovery of vial contents.

Description

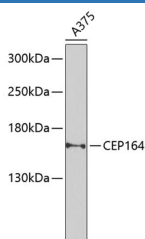
Reactivity	Human;Mouse;Rat
Immunogen	Recombinant fusion protein of human CEP164 (NP_055771.4).
Host	Rabbit
Isotype	IgG
Purification	Affinity purification
Buffer	Phosphate buffered solution, pH 7.4, containing 0.05% stabilizer and 50% glycerol.

Applications

Recommended Dilution

WB	1:500-1:2000
IHC	1:50-1:200

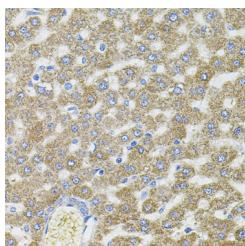
Data



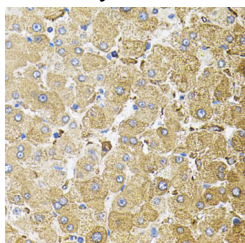
Western blot analysis of extracts of A-375 cells using CEP164 Polyclonal Antibody at dilution of 1:1000.

Observed-MV:164 kDa

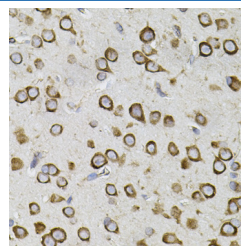
Calculated-MV:163 kDa/164 kDa



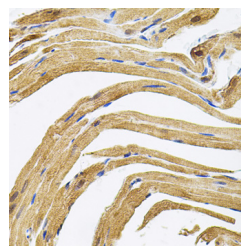
Immunohistochemistry of paraffin-embedded Rat liver using CEP164 Polyclonal Antibody



Immunohistochemistry of paraffin-embedded Human liver damage using CEP164 Polyclonal Antibody



Immunohistochemistry of paraffin-embedded Mouse brain using CEP164 Polyclonal Antibody



Immunohistochemistry of paraffin-embedded Rat heart using CEP164 Polyclonal Antibody

Preparation & Storage

Storage Store at -20°C Valid for 12 months. Avoid freeze / thaw cycles.

For Research Use Only

Toll-free: 1-888-852-8623
Web: www.elabscience.com

Tel: 1-832-243-6086
Email: techsupport@elabscience.com

Fax: 1-832-243-6017

Rev. V1.6

Shipping

The product is shipped with ice pack, upon receipt, store it immediately at the temperature recommended.

Background

This gene encodes a centrosomal protein involved in microtubule organization, DNA damage response, and chromosome segregation. The encoded protein is required for assembly of primary cilia and localizes to mature centrioles. Defects in this gene are a cause of nephronophthisis-related ciliopathies. Two transcript variants encoding different isoforms have been found for this gene.

For Research Use Only