

EGFR Polyclonal Antibody

catalog number: **E-AB-31291**

Note: Centrifuge before opening to ensure complete recovery of vial contents.

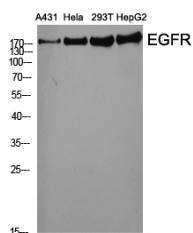
Description

| | |
|---------------------|---|
| Reactivity | Human;Mouse;Rat |
| Immunogen | Synthesized peptide derived from human EGFR around the non-phosphorylation site of Tyr1016. |
| Host | Rabbit |
| Isotype | IgG |
| Purification | Affinity purification |
| Buffer | Phosphate buffered solution, pH 7.4, containing 0.05% stabilizer, 0.5% protein protectant and 50% glycerol. |

Applications

| Applications | Recommended Dilution |
|--------------|----------------------|
| WB | 1:500-1:2000 |
| IHC | 1:100-1:300 |
| IF | 1:200-1:1000 |

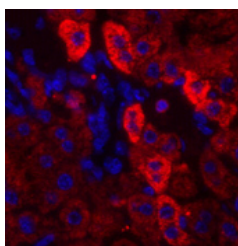
Data



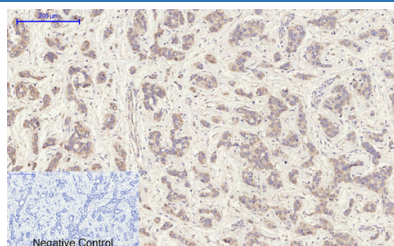
Western Blot analysis of various cells using EGFR Polyclonal Antibody at dilution of 1:2000.

Observed-MW:134 kDa

Calculated-MW:134 kDa



Immunofluorescence analysis of Mouse liver tissue using EGFR Polyclonal Antibody at dilution of 1:200.



Immunohistochemistry of paraffin-embedded Human liver cancer tissue using EGFR Polyclonal Antibody at dilution of 1:200.

Preparation & Storage

| | |
|-----------------|--|
| Storage | Store at -20°C Valid for 12 months. Avoid freeze / thaw cycles. |
| Shipping | The product is shipped with ice pack, upon receipt, store it immediately at the temperature recommended. |

Background

For Research Use Only

Receptor tyrosine kinase binding ligands of the EGF family and activating several signaling cascades to convert extracellular cues into appropriate cellular responses. Known ligands include EGF, TGFA/TGF- α , amphiregulin, epigen/EPGN, BTC/betacellulin, epiregulin/EREG and HBEGF/heparin-binding EGF. Ligand binding triggers receptor homo- and/or heterodimerization and autophosphorylation on key cytoplasmic residues. The phosphorylated receptor recruits adapter proteins like GRB2 which in turn activates complex downstream signaling cascades. Activates at least 4 major downstream signaling cascades including the RAS-RAF-MEK-ERK, PI3 kinase-AKT, PLCgamma-PKC and STATs modules. May also activate the NF-kappa-B signaling cascade. Also directly phosphorylates other proteins like RGS16, activating its GTPase activity and probably coupling the EGF receptor signaling to the G protein-coupled receptor signaling. Also phosphorylates MUC1 and increases its interaction with SRC and CTNNB1/beta-catenin. Isoform 2 may act as an antagonist of EGF action.

For Research Use Only

Toll-free: 1-888-852-8623
Web: www.elabscience.com

Tel: 1-832-243-6086
Email: techsupport@elabscience.com

Fax: 1-832-243-6017

Rev. V1.7