

Recombinant Glyt2 Monoclonal Antibody

catalog number: AN301241L

Note: Centrifuge before opening to ensure complete recovery of vial contents.

Description

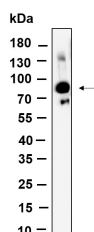
Reactivity	Human;Mouse;Rat
Immunogen	Recombinant Human Glyt2 protein
Host	Rabbit
Isotype	IgG, κ
Clone	5B13
Purification	Protein A
Buffer	PBS, 50% glycerol, 0.05% Proclin 300, 0.05% protein protectant.

Applications

Recommended Dilution

WB	1:1000-1:5000
-----------	---------------

Data



Western Blot with Recombinant Glyt2 Monoclonal Antibody at dilution of 1:1000 dilution. Lane A: Mouse brain lysate.

Observed-MW:88 kDa

Calculated-MW:88 kDa

Preparation & Storage

Storage	Store at -20°C Valid for 12 months. Avoid freeze / thaw cycles.
Shipping	Ice bag

Background

This gene encodes a sodium- and chloride-dependent glycine neurotransmitter transporter. This integral membrane glycoprotein is responsible for the clearance of extracellular glycine during glycine-mediated neurotransmission. This protein is found in glycinergic axons and maintains a high presynaptic pool of neurotransmitter at glycinergic synapses. Mutations in this gene cause hyperekplexia; a heterogeneous neurological disorder characterized by exaggerated startle responses and neonatal apnea. Two transcript variants encoding different isoforms have been found for this gene.

For Research Use Only