

## PE Anti-Mouse F4/80 Antibody[Cl:A3-1]

Catalog Number: E-AB-F0995D

Note: Centrifuge before opening to ensure complete recovery of vial contents.

### Description

|                                |   |
|--------------------------------|---|
| <b>Reactivity</b>              | Mouse   |
| <b>Host</b>                    | Rat   |
| <b>Isotype</b>                 | Rat IgG2b, κ  |
| <b>Clone No.</b>               | Cl:A3-1   |
| <b>Isotype Control</b>         | PE Rat IgG2b, κ Isotype Control[LTF-2] [Product E-AB-F09842D]   |
| <b>Conjugation</b>             | PE  |
| <b>Conjugation Information</b> | PE is designed to be excited by the Blue (488 nm), Green (532 nm) and Yellow-Green (561 nm) lasers and detected using an optical filter centered near 575 nm (e.g., a 585/42 nm bandpass filter). |
| <b>Storage Buffer</b>          | Phosphate buffered solution, pH 7.2, containing 0.09% sodium azide and 1% BSA.  |

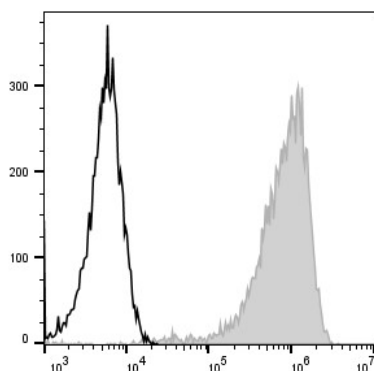
### Applications

### Recommended usage

FCM

Each lot of this antibody is quality control tested by flow cytometric analysis. **The amount of the reagent is suggested to be used 5 μL of antibody per test (million cells in 100 μL staining volume or per 100 μL of whole blood).** Please check your vial before the experiment. Since applications vary, the appropriate dilutions must be determined for individual use.

### Data



Staining of C57BL/6 murine abdominal macrophages elicited by Thioglycolate are stained with PE Anti-Mouse F4/80 Antibody[Cl:A3-1] (filled gray histogram) or PE Rat IgG2b, κ Isotype Control (empty black histogram). Cells in the macrophages gate were used for analysis.

### Preparation & Storage

|                 |   |
|-----------------|---|
| <b>Storage</b>  | Keep as concentrated solution.<br>This product can be stored at 2-8°C for 12 months. Please protected from prolonged exposure to light and do not freeze. |
| <b>Shipping</b> | Ice bag   |

### Antigen Information

|                        |  |
|------------------------|--|
| <b>Alternate Names</b> | Gpf480;Adgre1;Adhesion G protein-coupled receptor E1;Cell surface glycoprotein F4/80;EGF-like module receptor 1;Emr1 |
|------------------------|--|

### For Research Use Only

**Uniprot ID**

Q61549

**Gene ID**

13733

**Background**

F4/80 is a 160 kD glycoprotein. It is characterized as a member of the epidermal growth factor (EGF)-transmembrane 7 (TM7) family. F4/80, also known as EMR1 or Ly71, has been widely used as a murine macrophage marker, which is expressed on the majority of tissue macrophages including peritoneal macrophages, macrophages in lung, gut, thymus and red pulp of spleen (but not on the macrophages located in T cell areas of the spleen, lymph node and Peyer's patch), Kuffer cells, Langerhans cells, and bone marrow stromal cells. F4/80 has also been shown on a subset of dendritic cells. The biological ligand of F4/80 has not been identified, but it has been reported that F4/80 is required for induction of CD8+ T cells-mediated peripheral tolerance.