

Recombinant Cathepsin B Monoclonal Antibody

catalog number: **E-AB-81543**

Note: Centrifuge before opening to ensure complete recovery of vial contents.

Description

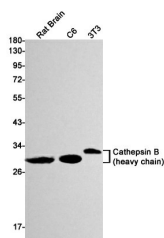
Reactivity	Mouse;Rat
Immunogen	Recombinant protein of mouse Cathepsin B
Host	Rabbit
Isotype	IgG
Clone	R08-7H4
Purification	Affinity Purified
Buffer	50mM Tris-Glycine(pH 7.4), 0.15M NaCl, 40% Glycerol, 0.05% stabilizer and 0.05% protective protein.

Applications

Recommended Dilution

WB	1:500-1:1000
IF	1:50-1:100

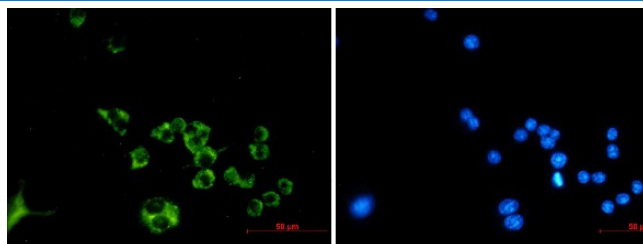
Data



Western blot detection of Cathepsin B in Rat Brain, C6, 3T3 cell lysates using Cathepsin B Rabbit mAb(1:1000 diluted). Predicted band size: 37kDa. Observed band size: 27,30kDa.

Observed-MW: 27 /30 kDa

Calculated-MW: 37 kDa



Immunofluorescence of Cathepsin B (green) in Raw264.7 using Cathepsin B antibody at dilution 1:50, and DAPI(blue)

Preparation & Storage

Storage	Store at -20°C Valid for 12 months. Avoid freeze / thaw cycles.
Shipping	The product is shipped with ice pack, upon receipt, store it immediately at the temperature recommended.

Background

Thiol protease which is believed to participate in intracellular degradation and turnover of proteins. Cleaves matrix extracellular phosphoglycoprotein MEPE. Has also been implicated in tumor invasion and metastasis.

For Research Use Only