

CTNNA2 Polyclonal Antibody

catalog number: E-AB-65239

Note: Centrifuge before opening to ensure complete recovery of vial contents.

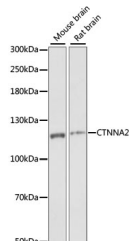
Description

| | |
|---------------------|--|
| Reactivity | Mouse;Rat |
| Immunogen | Recombinant fusion protein of human CTNNA2 (NP_004380.2). |
| Host | Rabbit |
| Isotype | IgG |
| Purification | Affinity purification |
| Buffer | Phosphate buffered solution, pH 7.4, containing 0.05% stabilizer and 50% glycerol. |

Applications

| | |
|------------|--------------|
| WB | 1:200-1:2000 |
| IHC | 1:50-1:200 |

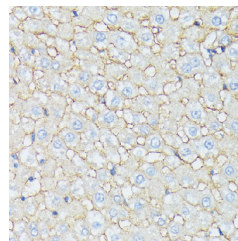
Data



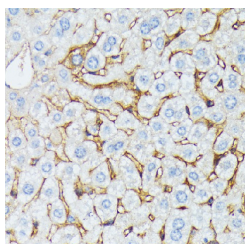
Western blot analysis of extracts of various cell lines using CTNNA2 Polyclonal Antibody at dilution of 1:1000.

Observed-MW:120 kDa

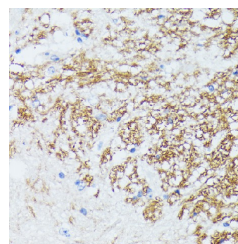
Calculated-MW:59 kDa/65 kDa/95 kDa/100 kDa/104 kDa/105 kDa



Immunohistochemistry of paraffin-embedded Rat liver using CTNNA2 Polyclonal Antibody at dilution of 1:100 (40x lens).



Immunohistochemistry of paraffin-embedded Mouse liver using CTNNA2 Polyclonal Antibody at dilution of 1:100 (40x lens).



Immunohistochemistry of paraffin-embedded Mouse spinal cord using CTNNA2 Polyclonal Antibody at dilution of 1:100 (40x lens).

Preparation & Storage

| | |
|-----------------|--|
| Storage | Store at -20°C Valid for 12 months. Avoid freeze / thaw cycles. |
| Shipping | The product is shipped with ice pack, upon receipt, store it immediately at the temperature recommended. |

Background

For Research Use Only

CTNNA2 (Catenin Alpha 2) is a Protein Coding gene. Diseases associated with CTNNA2 include Cortical Dysplasia, Complex, With Other Brain Malformations 9 and Arrhythmogenic Right Ventricular Cardiomyopathy. Among its related pathways are Blood-Brain Barrier and Immune Cell Transmigration: VCAM-1/CD106 Signaling and Gastric cancer. Gene Ontology (GO) annotations related to this gene include structural molecule activity and structural constituent of cytoskeleton. An important paralog of this gene is CTNNA1.

For Research Use Only

Toll-free: 1-888-852-8623
Web: www.elabscience.com

Tel: 1-832-243-6086
Email: techsupport@elabscience.com

Fax: 1-832-243-6017

Rev. V1.7