

GIMAP2 Polyclonal Antibody

catalog number: E-AB-52899

Note: Centrifuge before opening to ensure complete recovery of vial contents.

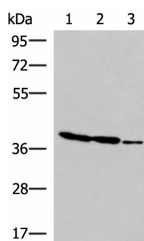
Description

Reactivity	Human
Immunogen	Fusion protein of human GIMAP2
Host	Rabbit
Isotype	IgG
Purification	Antigen affinity purification
Buffer	Phosphate buffered solution, pH 7.4, containing 0.05% stabilizer and 50% glycerol.

Applications

Applications	Recommended Dilution
WB	1:1000-1:5000
IHC	1:50-1:300

Data



Western blot analysis of HT-29 K562 and HUVEC cell lysates using GIMAP2 Polyclonal Antibody at dilution of 1:1000

Observed-MW:Refer to figures
Calculated-MW:38 kDa



Immunohistochemistry of paraffin-embedded Human tonsil tissue using GIMAP2 Polyclonal Antibody at dilution of 1:60(×200)

Preparation & Storage

Storage	Store at -20°C Valid for 12 months. Avoid freeze / thaw cycles.
Shipping	The product is shipped with ice pack, upon receipt, store it immediately at the temperature recommended.

Background

This gene encodes a protein belonging to the GTP-binding superfamily and to the immuno-associated nucleotide (IAN) subfamily of nucleotide-binding proteins. In humans, the IAN subfamily genes are located in a cluster at 7q36.1. GIMAP2 (GTPase, IMAP Family Member 2) is a Protein Coding gene. Diseases associated with GIMAP2 include Behcet Syndrome. GO annotations related to this gene include GTP binding. An important paralog of this gene is GIMAP1-GIMAP5.

For Research Use Only