

c-Fos Monoclonal Antibody

Catalog Number: E-AB-70204

1 Publications



Note: Centrifuge before opening to ensure complete recovery of vial contents.

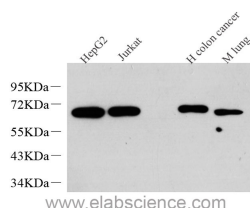
Description

Reactivity	Human, Mouse, Rat
Immunogen	KLH conjugated Synthetic peptide corresponding to Mouse c-FOS
Host	Mouse
Isotype	IgG
Clone	4B4F11
Purification	Affinity purification
Conjugation	Unconjugated
Formulation	PBS with 0.02% sodium azide, 1% protective protein and 50% glycerol, pH7.4

Applications

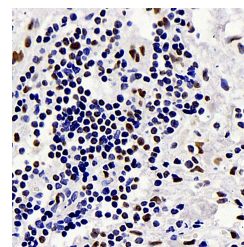
Applications	Recommended Dilution
WB	1:500-1:2000
IHC	1:500-1:2000
IF	1:200-1:1000

Data

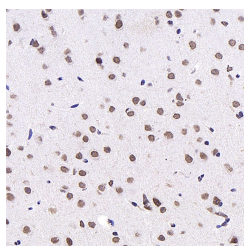


Western Blot analysis of various samples using c-Fos Monoclonal Antibody at dilution of 1:1000.

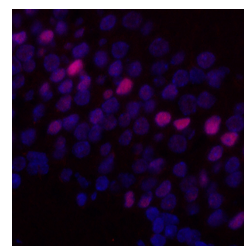
Observed Mw:62kDa
Calculated Mw:62kDa



Immunohistochemistry analysis of paraffin-embedded human gallbladder using c-Fos Monoclonal Antibody at dilution of 1:1000.



Immunohistochemistry analysis of paraffin-embedded mouse brain using c-Fos Monoclonal Antibody at dilution of 1:1000.



Immunofluorescence analysis of paraffin-embedded rat brain using c-Fos Monoclonal Antibody at dilution of 1:400.

Preparation & Storage

Storage Store at -20°C. Avoid freeze / thaw cycles.

Background

For Research Use Only

A Reliable Research Partner in Life Science and Medicine

Toll-free: 1-888-852-8623

Tel: 1-832-243-6086

Fax: 1-832-243-6017

Web: www.elabscience.com

Email: techsupport@elabscience.com

c-Fos Monoclonal Antibody

Catalog Number: E-AB-70204

1 Publications



The Fos gene family consists of 4 members: FOS, FOSB, FOSL1, and FOSL2. These genes encode leucine zipper proteins that can dimerize with proteins of the JUN family, thereby forming the transcription factor complex AP-1. As such, the FOS proteins have been implicated as regulators of cell proliferation, differentiation, and transformation. In some cases, expression of the FOS gene has also been associated with apoptotic cell death.

For Research Use Only

A Reliable Research Partner in Life Science and Medicine

Toll-free: 1-888-852-8623

Tel: 1-832-243-6086

Fax: 1-832-243-6017

Web: www.elabscience.com

Email: techsupport@elabscience.com