

## EZH1 Polyclonal Antibody

catalog number: **E-AB-91095**

**Note:** Centrifuge before opening to ensure complete recovery of vial contents.

### Description

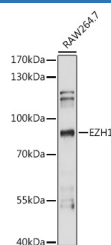
|                     |  |
|---------------------|--|
| <b>Reactivity</b>   | Human;Mouse;Rat  |
| <b>Immunogen</b>    | Recombinant fusion protein of human EZH1   |
| <b>Host</b>         | Rabbit   |
| <b>Isotype</b>      | IgG  |
| <b>Purification</b> | Affinity purification  |
| <b>Buffer</b>       | Phosphate buffered solution, pH 7.4, containing 0.05% stabilizer and 50% glycerol. |

### Applications

### Recommended Dilution

|           |              |
|-----------|--------------|
| <b>WB</b> | 1:200-1:2000 |
|-----------|--------------|

### Data



Western blot analysis of extracts of RAW264.7 cells using  
EZH1 Polyclonal Antibody at 1:1000 dilution.

**Observed-MV:100 kDa**

**Calculated-MV:68 kDa/76 kDa/80 kDa/85 kDa/86 kDa**

### Preparation & Storage

|                 |  |
|-----------------|--|
| <b>Storage</b>  | Store at -20°C Valid for 12 months. Avoid freeze / thaw cycles.  |
| <b>Shipping</b> | The product is shipped with ice pack, upon receipt, store it immediately at the temperature recommended. |

### Background

EZH1 is a component of a noncanonical Polycomb repressive complex-2 (PRC2) that mediates methylation of histone H3 (see MIM 602812) lys27 (H3K27) and functions in the maintenance of embryonic stem cell pluripotency and plasticity (Shen et al., 2008 [PubMed 19026780]).[supplied by OMIM, Mar 2009]

### For Research Use Only