

Recombinant Human GGPS1 Protein (His Tag)

Catalog Number: PKSH032484

Note: Centrifuge before opening to ensure complete recovery of vial contents.

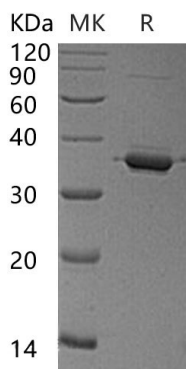
Description

Species	Human
Source	E.coli-derived Human GGPS1 protein Met 1-Glu300, with an N-terminal His
Calculated MW	37.0 kDa
Observed MW	35 kDa
Accession	O95749
Bio-activity	Not validated for activity

Properties

Purity	> 95 % as determined by reducing SDS-PAGE.
Concentration	Subject to label value.
Endotoxin	< 1.0 EU per µg of the protein as determined by the LAL method.
Storage	Store at < -20°C, stable for 6 months. Please minimize freeze-thaw cycles.
Shipping	This product is provided as liquid. It is shipped at frozen temperature with blue ice/ gel packs. Upon receipt, store it immediately at < - 20°C.
Formulation	Supplied as a 0.2 µm filtered solution of 20mM Tris-HCl, 150mM NaCl, 20% Glycerol, pH 8.0.

Data



> 95 % as determined by reducing SDS-PAGE.

Background

Geranylgeranyl pyrophosphate synthase (GGPS1) is a member of the FPP/GGPP synthase family. GGPS1 is highly expressed in testis, heart and skeletal muscle. GGPS1 is localized in the cytoplasm and has geranylgeranyl diphosphate (GGPP) synthase activity. It catalyzes the trans-addition of the three molecules of IPP onto DMAPP to form geranylgeranyl pyrophosphate, an important precursor of carotenoids and geranylated proteins. Other transcriptional splice variants have been found.

For Research Use Only

Toll-free: 1-888-852-8623
Web: www.elabscience.com

Tel: 1-832-243-6086
Email: techsupport@elabscience.com

Fax: 1-832-243-6017