

HTRA2 Polyclonal Antibody

catalog number: E-AB-52111

Note: Centrifuge before opening to ensure complete recovery of vial contents.

Description

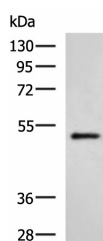
| | |
|---------------------|--|
| Reactivity | Human;Mouse |
| Immunogen | Synthetic peptide of human HTRA2 |
| Host | Rabbit |
| Isotype | IgG |
| Purification | Antigen affinity purification |
| Conjugation | Unconjugated |
| buffer | Phosphate buffered solution, pH 7.4, containing 0.05% stabilizer and 50% glycerol. |

Applications

Recommended Dilution

| | |
|-----------|--------------|
| WB | 1:500-1:2000 |
|-----------|--------------|

Data



Western blot analysis of Hela cell lysate using HTRA2

Polyclonal Antibody at dilution of 1:500

Observed-MV: Refer to figures

Calculated-MV: 49 kDa

Preparation & Storage

| | |
|-----------------|--|
| Storage | Store at -20°C Valid for 12 months. Avoid freeze / thaw cycles. |
| Shipping | The product is shipped with ice pack, upon receipt, store it immediately at the temperature recommended. |

Background

This gene encodes a serine protease. The protein has been localized in the endoplasmic reticulum and interacts with an alternatively spliced form of mitogen-activated protein kinase 14. The protein has also been localized to the mitochondria with release to the cytosol following apoptotic stimulus. The protein is thought to induce apoptosis by binding the apoptosis inhibitory protein baculoviral IAP repeat-containing 4. Nuclear localization of this protein has also been observed. Alternate splicing of this gene results in multiple transcript variants encoding different isoforms.

For Research Use Only