

Setd5 Polyclonal Antibody

catalog number: **E-AB-92326**

Note: Centrifuge before opening to ensure complete recovery of vial contents.

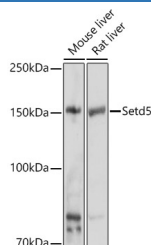
Description

Reactivity	Mouse;Rat
Immunogen	A synthetic peptide of human Setd5
Host	Rabbit
Isotype	IgG
Purification	Affinity purification
Buffer	Phosphate buffered solution, pH 7.4, containing 0.05% stabilizer and 50% glycerol.

Applications Recommended Dilution

WB	1:500-1:2000
-----------	--------------

Data



Western blot analysis of extracts of various cell lines using Setd5 Polyclonal Antibody at 1:500 dilution.

Observed-MW:158 kDa

Preparation & Storage

Storage	Store at -20°C Valid for 12 months. Avoid freeze / thaw cycles.
Shipping	The product is shipped with ice pack, upon receipt, store it immediately at the temperature recommended.

Background

Enables histone methyltransferase activity (H3-K36 specific) and histone methyltransferase activity (H3-K9 specific). Involved in several processes, including histone H3-K36 trimethylation; regulation of DNA-templated transcription, elongation; and regulation of histone acetylation. Located in euchromatin and nucleus. Part of Cdc73/Paf1 complex. Is expressed in several structures, including alimentary system; genitourinary system; nervous system; respiratory system; and sensory organ. Human ortholog(s) of this gene implicated in autosomal dominant non-syndromic intellectual disability 23. Orthologous to human SETD5 (SET domain containing 5).

For Research Use Only