

Recombinant Human Ephrin-A4/EFNA4 Protein (Fc & His Tag)

Catalog Number: PKSH032392

Note: Centrifuge before opening to ensure complete recovery of vial contents.

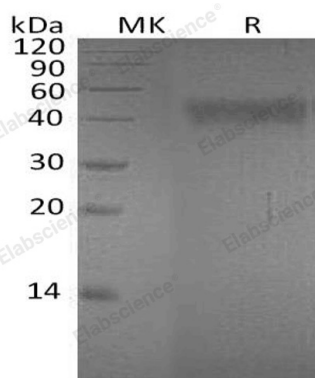
Description

Species	Human
Source	HEK293 Cells-derived Human Ephrin-A4;EFNA4 protein Leu26-Gly171, with an C-terminal Fc & His
Calculated MW	44.3 kDa
Observed MW	45 kDa
Accession	P52798
Bio-activity	Immobilized Human EphA7-His(Cat: PKSH033689) at 2µg/ml(100 µl/well) can bind Human EFNA4-Fc-6His. The ED ₅₀ of Human EFNA4-Fc-6His is 1. 5190 ug/ml.

Properties

Purity	> 95 % as determined by reducing SDS-PAGE.
Endotoxin	< 1.0 EU per µg of the protein as determined by the LAL method.
Storage	Generally, lyophilized proteins are stable for up to 12 months when stored at -20 to -80 °C. Reconstituted protein solution can be stored at 4-8°C for 2-7 days. Aliquots of reconstituted samples are stable at < -20°C for 3 months.
Shipping	This product is provided as lyophilized powder which is shipped with ice packs.
Formulation	Lyophilized from a 0.2 µm filtered solution of PBS, pH 7.4. Normally 5% - 8% trehalose, mannitol and 0.01% Tween 80 are added as protectants before lyophilization. Please refer to the specific buffer information in the printed manual.
Reconstitution	Please refer to the printed manual for detailed information.

Data



> 95 % as determined by reducing SDS-PAGE.

Background

Ephrin-A4 is a member of the ephrin ligand family which binds members of the Eph receptor family. All ligands share a conserved extracellular sequence; which most likely corresponds to the receptor binding domain. Ephrin-A4 consists of approximately 125 amino acids and includes four invariant cysteines; It has been shown to bind EphA2; EphA3; EphA4; EphA5; EphA6; EphA7; and EphB1. Ephrin-A4 binds promiscuously Eph receptors residing on adjacent cells; leading to contact-dependent bidirectional signaling into neighboring cells. It may play a role in the interaction between activated B-lymphocytes and dendritic cells in tonsils.

For Research Use Only