

Recombinant Human S100A4 Protein (His Tag)

Catalog Number: PKSH033548

Note: Centrifuge before opening to ensure complete recovery of vial contents.

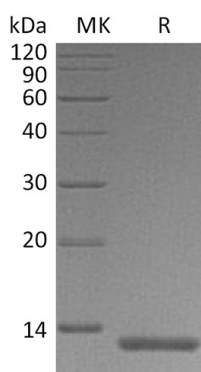
Description

| | |
|----------------------|---|
| Species | Human |
| Source | E.coli-derived Human S100A4 protein Met1-Lys101, with an C-terminal His |
| Calculated MW | 12.6 kDa |
| Observed MW | 13 kDa |
| Accession | P26447 |
| Bio-activity | Not validated for activity |

Properties

| | |
|-----------------------|--|
| Purity | > 95 % as determined by reducing SDS-PAGE. |
| Endotoxin | < 1.0 EU per µg of the protein as determined by the LAL method. |
| Storage | Generally, lyophilized proteins are stable for up to 12 months when stored at -20 to -80 °C. Reconstituted protein solution can be stored at 4-8°C for 2-7 days. Aliquots of reconstituted samples are stable at < -20°C for 3 months. |
| Shipping | This product is provided as lyophilized powder which is shipped with ice packs. |
| Formulation | Lyophilized from a 0.2 µm filtered solution of 20mM PB, 6% Sucrose, 4% Mannitol, 50mM NaCl, 0.05% Tween 80, pH 7.0. Normally 5% - 8% trehalose, mannitol and 0.01% Tween 80 are added as protectants before lyophilization. Please refer to the specific buffer information in the printed manual. |
| Reconstitution | Please refer to the printed manual for detailed information. |

Data



> 95 % as determined by reducing SDS-PAGE.

Background

S100A4 is a member of the S100 family of proteins. The S100 family is further classified as a member of the EF-hand superfamily of Ca⁺⁺-binding proteins. These participate in both calcium-dependent and calcium-independent protein-protein interactions. The hallmark of this superfamily is the EF-hand motif that consists of a Ca⁺⁺-binding site flanked by two α -helices (helix E and helix F) that were originally identified in a right-handed model of carp muscle calcium-binding protein. Human S100A4 is 101 amino acids (aa) in length. It contains two EF hand domains, one between aa 12-47, and a second between aa 50-85. S100A4 activity has been associated with cell transformation. It seems likely this is either coincidental, or a consequence, rather than a cause of transformation.

For Research Use Only