

Recombinant Human GRB2 Protein (His Tag)

Catalog Number:PKSH032512



Note: Centrifuge before opening to ensure complete recovery of vial contents.

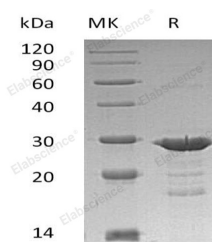
Description

Synonyms	Growth Factor Receptor-Bound Protein 2;Adapter Protein GRB2;Protein Ash;SH2/SH3 Adapter GRB2;GRB2;ASH
Species	Human
Expression Host	E.coli
Sequence	Met 1-Val217
Accession	P62993
Calculated Molecular Weight	26.3 kDa
Observed molecular weight	25-30 kDa
Tag	C-His

Properties

Purity	> 90 % as determined by reducing SDS-PAGE.
Endotoxin	< 1.0 EU per µg of the protein as determined by the LAL method.
Storage	Generally, lyophilized proteins are stable for up to 12 months when stored at -20 to -80°C. Reconstituted protein solution can be stored at 4-8°C for 2-7 days. Aliquots of reconstituted samples are stable at < -20°C for 3 months.
Shipping	This product is provided as lyophilized powder which is shipped with ice packs.
Formulation	Lyophilized from a 0.2 µm filtered solution of 20mM PB, 6% Sucrose, 4% Mannitol, 50mM NaCl, 0.05% Tween 80, pH8.0. Normally 5 % - 8 % trehalose, mannitol and 0.01% Tween80 are added as protectants before lyophilization. Please refer to the specifi
Reconstitution	Please refer to the printed manual for detailed information.

Data



> 90 % as determined by reducing SDS-PAGE.

Background

As an adaptor protein, Growth Factor Receptor-Bound Protein 2 (GRB2) is involved in signal transduction and consists of a central SH2 domain flanked by two SH3 domains. GRB2 associates with activated Tyr-phosphorylated EGF receptor/EGFR and PDGF receptors via its SH2 domain, stimulating GTP binding to Ras, which in turn activates MAPK and other signaling pathway. It also associates to other cellular Tyr-phosphorylated proteins such as SIT1, IRS1, IRS4, SHC and LNK, probably via the concerted action of both its SH2 and SH3 domains.

For Research Use Only

A Reliable Research Partner in Life Science and Medicine

Toll-free: 1-888-852-8623

Web: www.elabscience.com

Tel: 1-832-243-6086

Email: techsupport@elabscience.com

Fax: 1-832-243-6017