

## Elab Fluor® 647 Anti-Mouse CD335/NKp46 Antibody[29A1.4]

Catalog Number: E-AB-F1182UM

Note: Centrifuge before opening to ensure complete recovery of vial contents.

### Description

<b>Reactivity</b>	Mouse
<b>Host</b>	Rat
<b>Isotype</b>	Rat IgG2a, κ
<b>Clone No.</b>	29A1.4
<b>Isotype Control</b>	Elab Fluor® 647 Rat IgG2a, κ Isotype Control[2A3] [Product E-AB-F09833M]
<b>Conjugation</b>	Elab Fluor® 647
<b>Conjugation Information</b>	Elab Fluor® 647 is designed to be excited by the Red laser (627-640 nm) and detected using an optical filter centered near 670 nm (e.g., a 660/20 nm bandpass filter).
<b>Storage Buffer</b>	Phosphate buffered solution, pH 7.2, containing 0.09% sodium azide and 1% BSA.

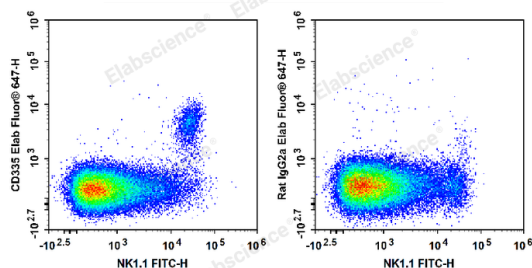
### Applications

### Recommended usage

#### FCM

Each lot of this antibody is quality control tested by flow cytometric analysis. Please check your vial before the experiment. Since applications vary, the appropriate dilutions must be determined for individual use. We suggest each investigator should titrate the reagent to obtain optimal results [The recommended concentration is 0.1-1 μg/10<sup>6</sup> cells in 100 μL volume].

### Data



C57BL/6 murine splenocytes are stained with FITC Anti-

Mouse NK1.1 Antibody and Elab Fluor® 647 Anti-Mouse CD335 Antibody (Left). Splenocytes are stained with FITC

Anti-Mouse NK1.1 Antibody and Elab Fluor® 647 Rat IgG2a, κ Isotype Control (Right).

### Preparation & Storage

<b>Storage</b>	Keep as concentrated solution. This product can be stored at 2-8°C for 12 months. Please protected from prolonged exposure to light and do not freeze.
<b>Shipping</b>	Ice bag

### Antigen Information

<b>Alternate Names</b>	Ly94;Lymphocyte antigen 94;NK-p46;mAR-1;mNKp46
<b>Uniprot ID</b>	Q8C567
<b>Gene ID</b>	17086

### For Research Use Only

## Background

CD335, also known as NKp46, is a single-pass type I membrane protein of 46 kD. It belongs to the natural cytotoxicity receptor (NCR) family and contains two Ig-like (immunoglobulin-like) domains. Its expression is restricted to NK cells and a subset of NKT cells; it's not expressed in CD1d-restricted NKT cells. CD335 is a receptor for viral hemagglutinins and heparan sulfate proteoglycans and is involved in NK cell activation.