

Recombinant Human SGSH Protein (His Tag)

Catalog Number: PKSH032823

Note: Centrifuge before opening to ensure complete recovery of vial contents.

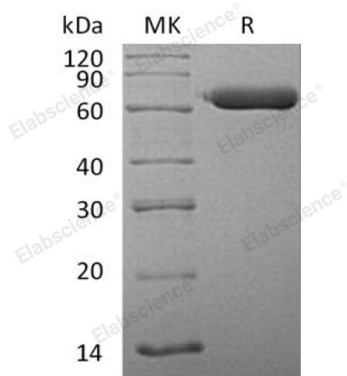
Description

Species	Human
Source	HEK293 Cells-derived Human SGSH protein Arg21-Leu502, with an C-terminal His
Mol_Mass	55.7 kDa
Accession	P51688
Bio-activity	Not validated for activity

Properties

Purity	> 95 % as determined by reducing SDS-PAGE.
Endotoxin	< 1.0 EU per µg of the protein as determined by the LAL method.
Storage	Store at < -20°C, stable for 6 months. Please minimize freeze-thaw cycles.
Shipping	This product is provided as liquid. It is shipped at frozen temperature with blue ice/gel packs. Upon receipt, store it immediately at < - 20°C.
Formulation	Supplied as a 0.2 µm filtered solution of 20mM Tris-HCl, 150mM NaCl, 1mM CaCl ₂ , 10% Glycerol, pH 7.5.
Reconstitution	Not Applicable

Data



> 95 % as determined by reducing SDS-PAGE.

Background

N-Sulphoglucosamine Sulphohydrolase (SGSH) is an important member of the sulfatase family which is involved in the degradation of heparin sulfate. SGSH binds one calcium ion per subunit as a cofactor. SGSH catalyzes N-sulfo-D-glucosamine and H₂O to D-glucosamine and sulfate. SGSH deficiency is result in mucopolysaccharidosis type 3A (MPS3A), a recessive lysosomal storage disease characterized by neurological dysfunction but relatively mild somatic manifestations.

For Research Use Only

Toll-free: 1-888-852-8623
Web: www.elabscience.com

Tel: 1-832-243-6086
Email: techsupport@elabscience.com

Fax: 1-832-243-6017