

## MMP26 Polyclonal Antibody

catalog number: E-AB-12574

**Note:** Centrifuge before opening to ensure complete recovery of vial contents.

### Description

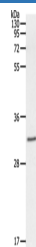
Reactivity	Human
Immunogen	Synthetic peptide of human MMP26
Host	Rabbit
Isotype	IgG
Purification	Affinity purification
Conjugation	Unconjugated
Buffer	Phosphate buffered solution, pH 7.4, containing 0.05% stabilizer and 50% glycerol.

### Applications

### Recommended Dilution

WB	1:200-1:1000
----	--------------

### Data



Western Blot analysis of 293T cell using MMP26 Polyclonal

Antibody at dilution of 1:500

Calculated-MW:30 kDa

### Preparation & Storage

Storage	Store at -20°C Valid for 12 months. Avoid freeze / thaw cycles.
Shipping	The product is shipped with ice pack, upon receipt, store it immediately at the temperature recommended.

### Background

Proteins of the matrix metalloproteinase (MMP) family are involved in the breakdown of extracellular matrix in normal physiological processes, such as embryonic development, reproduction, and tissue remodeling, as well as in disease processes, such as arthritis and metastasis. Most MMP's are secreted as inactive proproteins which are activated when cleaved by extracellular proteinases. The encoded protein degrades type IV collagen, fibronectin, fibrinogen, casein, vitronectin, alpha 1-antitrypsin, alpha 2-macroglobulin, and insulin-like growth factor-binding protein 1, and activates MMP9 by cleavage. The protein differs from most MMP family members in that it lacks a conserved C-terminal protein domain.