

# Recombinant Mouse CD20/MS4A1 protein (His tag)

Catalog Number: PDEM100105



**Note:** Centrifuge before opening to ensure complete recovery of vial contents.

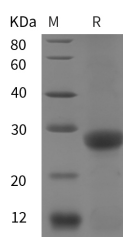
## Description

<b>Synonyms</b>	CD20;B-lymphocyte antigen CD20;Ms4a1;B-cell differentiation antigen Ly-44;Lymphocyte antigen 44;Membrane-spanning 4-domains subfamily A member 1
<b>Species</b>	Mouse
<b>Expression Host</b>	E.coli
<b>Sequence</b>	Leu 133-Pro 291
<b>Accession</b>	P19437
<b>Calculated Molecular Weight</b>	17.4 kDa
<b>Observed molecular weight</b>	28 kDa
<b>Tag</b>	N-His

## Properties

<b>Purity</b>	> 95 % as determined by reducing SDS-PAGE.
<b>Endotoxin</b>	Please contact us for more information.
<b>Storage</b>	Generally, lyophilized proteins are stable for up to 12 months when stored at -20 to -80°C. Reconstituted protein solution can be stored at 4-8°C for 2-7 days. Aliquots of reconstituted samples are stable at < -20°C for 3 months.
<b>Shipping</b>	This product is provided as lyophilized powder which is shipped with ice packs.
<b>Formulation</b>	Lyophilized from sterile PBS, pH 7.4. Normally 5 % - 8 % trehalose, mannitol and 0.01 % Tween80 are added as protectants before lyophilization. Please refer to the specific buffer information in the printed manual.
<b>Reconstitution</b>	Please refer to the printed manual for detailed information.

## Data



> 95 % as determined by reducing SDS-PAGE.

## Background

CD20 is a 297 amino acid (aa) non-glycosylated type III membrane protein that is the founding member of the MS4A tetraspanin protein family. It is expressed on pre-B, naïve and mature B lymphocytes and B-cell lymphomas. CD20 is associated with lipid rafts upon crosslinking, and appears to play a role in regulation of ion influx. The one extracellular segment of 48 aa shows 65% aa sequence identity between human and mouse CD20.

## For Research Use Only

A Reliable Research Partner in Life Science and Medicine

Toll-free: 1-888-852-8623

Web: [www.elabscience.com](http://www.elabscience.com)

Tel: 1-832-243-6086

Email: [techsupport@elabscience.com](mailto:techsupport@elabscience.com)

Fax: 1-832-243-6017