

Recombinant Mouse S100A5 Protein (His Tag)

Catalog Number: PKSM040687

Note: Centrifuge before opening to ensure complete recovery of vial contents.

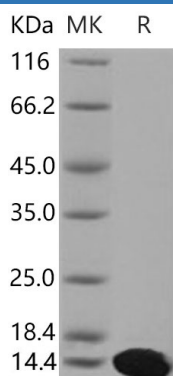
Description

| | |
|----------------------|--|
| Species | Mouse |
| Source | E.coli-derived Mouse S100A5 protein Met 1-Lys 93, with an N-terminal His |
| Calculated MW | 12.3 kDa |
| Observed MW | 13 kDa |
| Accession | P63084 |
| Bio-activity | Not validated for activity |

Properties

| | |
|-----------------------|---|
| Purity | > 97 % as determined by reducing SDS-PAGE. |
| Endotoxin | Please contact us for more information. |
| Storage | Generally, lyophilized proteins are stable for up to 12 months when stored at -20 to -80°C. Reconstituted protein solution can be stored at 4-8°C for 2-7 days. Aliquots of reconstituted samples are stable at < -20°C for 3 months. |
| Shipping | This product is provided as lyophilized powder which is shipped with ice packs. |
| Formulation | Lyophilized from sterile 50mM Tris, 20% glycerol, pH 7.5 Normally 5% - 8% trehalose, mannitol and 0.01% Tween 80 are added as protectants before lyophilization. |
| Reconstitution | Please refer to the specific buffer information in the printed manual. Please refer to the printed manual for detailed information. |

Data



> 97 % as determined by reducing SDS-PAGE.

Background

For Research Use Only

Toll-free: 1-888-852-8623
Web: www.elabscience.com

Tel: 1-832-243-6086
Email: techsupport@elabscience.com

Fax: 1-832-243-6017

S100 protein is a family of low molecular weight protein found in vertebrates characterized by two EF-hand calcium-binding motifs. There are at least 21 different S100 proteins, and the name is derived from the fact that the protein is 100% soluble in ammonium sulfate at neutral pH. Most S100 proteins are disulfide-linked homodimer, and is normally present in cells derived from the neural crest, chondrocytes, macrophages, dendritic cells, etc. S100 proteins have been implicated in a variety of intracellular and extracellular functions. They are involved in regulation of protein phosphorylation, transcription factors, the dynamics of cytoskeleton constituents, enzyme activities, cell growth and differentiation, and the inflammatory response. Protein S100-A5, also known as Protein S-100D, S100 calcium-binding protein A5, S100A5 and S100D, is a member of the S100 family which contains two EF-hand domains. S100A5 is also a novel member of the EF-hand superfamily of calcium-binding proteins that is poorly characterized at the protein level. It is expressed in very restricted regions of the adult brain. From birth onwards, S100A5 remained a neuronal-specific protein, only located in a subpopulation of neurons in the spiral ganglion.

For Research Use Only

Toll-free: 1-888-852-8623
Web: www.elabscience.com

Tel: 1-832-243-6086
Email: techsupport@elabscience.com

Fax: 1-832-243-6017