

Recombinant Mouse Angiotensin-Converting Enzyme 2/ACE-2 (C-10His)

Catalog Number: PKSM041433

Note: Centrifuge before opening to ensure complete recovery of vial contents.

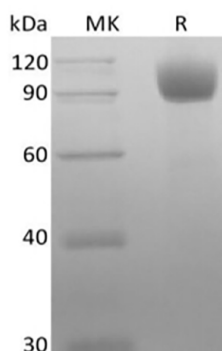
Description

Species	Mouse
Source	HEK293 Cells-derived Mouse ACE2/ACE-2 protein Gln18-Thr740, with an C-terminal His
Calculated MW	84.9 kDa
Observed MW	85-110 kDa
Accession	Q8R0I0
Bio-activity	Not validated for activity

Properties

Purity	> 95 % as determined by reducing SDS-PAGE.
Concentration	Subject to label value.
Endotoxin	< 1.0 EU per µg of the protein as determined by the LAL method.
Storage	Store at < -20°C, stable for 6 months. Please minimize freeze-thaw cycles.
Shipping	This product is provided as liquid. It is shipped at frozen temperature with blue ice/ gel packs. Upon receipt, store it immediately at < - 20°C.
Formulation	Supplied as a 0.2 µm filtered solution of 25mM Tris-HCl, 150mM NaCl, 1mM ZnCl ₂ , pH 7.5.

Data



> 95 % as determined by reducing SDS-PAGE.

Background

Angiotensin-Converting Enzyme 2 (ACE-2) is an integral membrane protein and a zinc metalloprotease of the ACE family, the ACE family includes somatic and germinal ACE. ACE-2 cleaves angiotensins I and II as a carboxypeptidase, ACE-2 converts angiotensin I to angiotensin 1-9, and angiotensin II to angiotensin 1-7. ACE-2 is also able to hydrolyze apelin-13 and dynorphin-13 with high efficiency. ACE-2 can be high expressed in testis, kidney and heart, in colon, small intestine and ovary at moderate levels. Captopril and lisinopril as the classical ACE inhibitor don't inhibit ACE-2 activity. ACE-2 may play an important role in regulating the heart function.

For Research Use Only