

Recombinant Human HEPACAM Protein (His Tag)

Catalog Number:PKSH032534



Note: Centrifuge before opening to ensure complete recovery of vial contents.

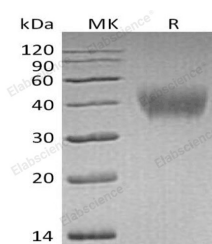
Description

Synonyms	Hepatocyte Cell Adhesion Molecule;Protein HepaCAM;HEPACAM
Species	Human
Expression Host	HEK293 Cells
Sequence	Val34-Ser240
Accession	Q14CZ8
Calculated Molecular Weight	24.1 kDa
Observed molecular weight	35-45 kDa
Tag	C-His

Properties

Purity	> 95 % as determined by reducing SDS-PAGE.
Endotoxin	< 1.0 EU per µg of the protein as determined by the LAL method.
Storage	Generally, lyophilized proteins are stable for up to 12 months when stored at -20 to -80°C. Reconstituted protein solution can be stored at 4-8°C for 2-7 days. Aliquots of reconstituted samples are stable at < -20°C for 3 months.
Shipping	This product is provided as lyophilized powder which is shipped with ice packs.
Formulation	Lyophilized from a 0.2 µm filtered solution of 20mM PB, 150mM NaCl, pH 7.2. Normally 5 % - 8 % trehalose, mannitol and 0.01% Tween80 are added as protectants before lyophilization. Please refer to the specific buffer information in the printed man
Reconstitution	Please refer to the printed manual for detailed information.

Data



> 95 % as determined by reducing SDS-PAGE.

Background

Hepatocyte Cell Adhesion Molecule (HEPACAM) is a single-pass type I membrane protein that localizes to the cytoplasmic side of the cell membrane. HEPACAM includes a signal sequence (amino acid 1-33), an extracellular region (amino acid 34-240) with one Ig-like C2-type domain and one Ig-like V-type domain, a transmembrane segment (amino acid 241-261), and a cytoplasmic domain (amino acid 262 - 416). The cytoplasmic domain plays an important role in regulation of cell-matrix adhesion and cell motility. HEPACAM acts as a homodimer and dimer formation occurs predominantly through cis interactions on the cell surface. HEPACAM is involved in cell motility and cell-matrix interactions. The expression of this gene is down-regulated or undetectable in many cancer cell lines, so this may be a tumor suppressor gene.

For Research Use Only

A Reliable Research Partner in Life Science and Medicine

Toll-free: 1-888-852-8623

Web: www.elabscience.com

Tel: 1-832-243-6086

Email: techsupport@elabscience.com

Fax: 1-832-243-6017