

## Recombinant PI3-Kinase p85 α Monoclonal Antibody

catalog number: **AN301112L**

**Note:** Centrifuge before opening to ensure complete recovery of vial contents.

### Description

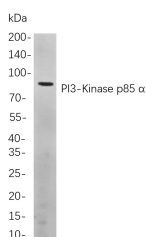
<b>Reactivity</b>	Human;Mouse;Rat
<b>Immunogen</b>	Recombinant Human PI3-Kinase p85 α protein
<b>Host</b>	Rabbit
<b>Isotype</b>	IgG,κ
<b>Clone</b>	B867
<b>Purification</b>	Protein A
<b>Buffer</b>	PBS, 50% glycerol, 0.05% Proclin 300, 0.05% protein protectant.

### Applications

### Recommended Dilution

<b>IHC</b>	1:200-1000
<b>WB</b>	1:1000-5000

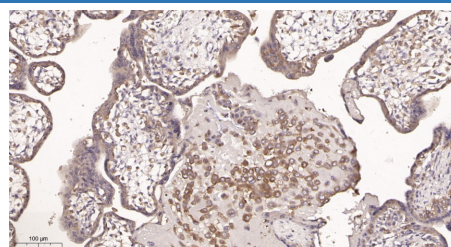
### Data



Western Blot with Recombinant PI3-Kinase p85 α Monoclonal Antibody at dilution of 1:1000 dilution. Lane A: HepG2 cells.

**Observed-MW:84 kDa**

**Calculated-MW:84 kDa**



Immunohistochemistry of paraffin-embedded human placenta tissue using Recombinant PI3-Kinase p85 α Monoclonal Antibody at dilution of 1:200.

### Preparation & Storage

<b>Storage</b>	Store at -20°C Valid for 12 months. Avoid freeze / thaw cycles.
<b>Shipping</b>	Ice bag

### Background

Phosphatidylinositol 3-kinase phosphorylates the inositol ring of phosphatidylinositol at the 3-prime position. The enzyme comprises a 110 kD catalytic subunit and a regulatory subunit of either 85, 55, or 50 kD. This gene encodes the 85 kD regulatory subunit. Phosphatidylinositol 3-kinase plays an important role in the metabolic actions of insulin, and a mutation in this gene has been associated with insulin resistance. Alternative splicing of this gene results in four transcript variants encoding different isoforms.

### For Research Use Only

Toll-free: 1-888-852-8623  
Web: [www.elabscience.com](http://www.elabscience.com)

Tel: 1-832-243-6086  
Email: [techsupport@elabscience.com](mailto:techsupport@elabscience.com)

Fax: 1-832-243-6017

Rev. V1.1