

# Recombinant Rhesus macaque CD27/TNFRSF7 Protein (His Tag)

Catalog Number: PKSQ050078



**Note:** Centrifuge before opening to ensure complete recovery of vial contents.

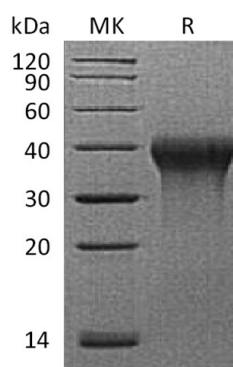
## Description

<b>Species</b>	Rhesus macaque
<b>Mol_Mass</b>	20.1 kDa
<b>Accession</b>	F7BYS2
<b>Bio-activity</b>	Not validated for activity

## Properties

<b>Purity</b>	> 95 % as determined by reducing SDS-PAGE.
<b>Endotoxin</b>	< 1.0 EU per µg of the protein as determined by the LAL method.
<b>Storage</b>	Generally, lyophilized proteins are stable for up to 12 months when stored at -20 to -80 °C. Reconstituted protein solution can be stored at 4-8°C for 2-7 days. Aliquots of reconstituted samples are stable at < -20°C for 3 months.
<b>Shipping</b>	This product is provided as lyophilized powder which is shipped with ice packs.
<b>Formulation</b>	Lyophilized from a 0.2 µm filtered solution of PBS, pH 7.4. Normally 5% - 8% trehalose, mannitol and 0.01% Tween 80 are added as protectants before lyophilization. Please refer to the specific buffer information in the printed manual.
<b>Reconstitution</b>	Please refer to the printed manual for detailed information.

## Data



> 95 % as determined by reducing SDS-PAGE.

## Background

CD27 antigen, also known as CD27L receptor, T-cell activation antigen CD27, T14, S152, Tp55, TNFRSF7 and Tumor necrosis factor receptor for superfamily member 7, belongs to the TNF-receptor superfamily. CD27 is a single-pass type I membrane protein and exists as a homodimer form, containing three TNFR-Cys repeats. CD27 transduces signals that lead to the activation of NF-KappaB and MAPK8/JNK. CD27 is involved in regulating B-cell activation and immunoglobulin synthesis, binding to the ligand CD70. TRAF2 and TRAF5 have been shown to mediate the signaling process of CD27. CD27-binding protein (SIVA), which is a proapoptotic protein, can bind to CD27 and is thought to play a key role in the apoptosis. CD27 is required for generation and long-term maintenance of T cell immunity.

## For Research Use Only

A Reliable Research Partner in Life Science and Medicine  
Tel: 400-999-2100

Email: [techsupport@elabscience.cn](mailto:techsupport@elabscience.cn)

Web: [www.elabscience.cn](http://www.elabscience.cn)

Rev. V3.2