

Recombinant Human CD3 ϵ /CD3E Protein (His Tag)

Catalog Number: PKSH033388



Note: Centrifuge before opening to ensure complete recovery of vial contents.

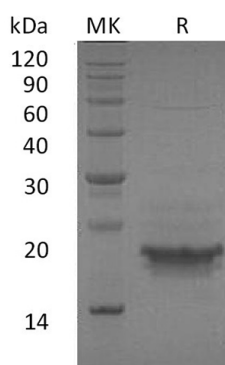
Description

Species	Human
Mol_Mass	12.8 kDa
Accession	P07766
Bio-activity	Immobilized Human CD3E-His at 10 ug/ml (100 ul/wel) can bind Human Anti-CD3 mAb. The ED50 of Recombinant Human Anti-CD3 mAb is 3-15 ng/ml.

Properties

Purity	> 95 % as determined by reducing SDS-PAGE.
Endotoxin	< 1.0 EU per μ g of the protein as determined by the LAL method.
Storage	Generally, lyophilized proteins are stable for up to 12 months when stored at -20 to -80 $^{\circ}$ C. Reconstituted protein solution can be stored at 4-8 $^{\circ}$ C for 2-7 days. Aliquots of reconstituted samples are stable at < -20 $^{\circ}$ C for 3 months.
Shipping	This product is provided as lyophilized powder which is shipped with ice packs.
Formulation	Lyophilized from a 0.2 μ m filtered solution of PBS, pH 7.4. Normally 5% - 8% trehalose, mannitol and 0.01% Tween 80 are added as protectants before lyophilization. Please refer to the specific buffer information in the printed manual.
Reconstitution	Please refer to the printed manual for detailed information.

Data



> 95 % as determined by reducing SDS-PAGE.

Background

T-Cell Surface Glycoprotein CD3 ϵ Chain (CD3 ϵ) is a single-pass type I membrane protein. CD3 ϵ contains 1 Ig-like (immunoglobulin-like) domain and 1 ITAM domain. CD3 ϵ is a polypeptide encoded by the CD3E gene on chromosome 11 in humans. The T cell receptor-CD3 complex (TCR/CD3 complex) is involved in T-cell development and several intracellular signal-transduction pathways. This complex is critical for T-cell development and function, and represents one of the most complex transmembrane receptors. The T cell receptor-CD3 complex is unique in having ten cytoplasmic immunoreceptor tyrosine-based activation motifs (ITAMs). TCR/CD3 complex plays an important role in coupling antigen recognition to several intracellular signal-transduction pathways.

For Research Use Only

A Reliable Research Partner in Life Science and Medicine
Tel: 400-999-2100

Email: techsupport@elabscience.cn

Web: www.elabscience.cn

Rev. V3.2