

Insulin Receptor Polyclonal Antibody

catalog number: E-AB-91652

Note: Centrifuge before opening to ensure complete recovery of vial contents.

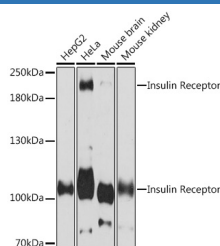
Description

Reactivity	Human;Mouse;Rat
Immunogen	Recombinant fusion protein of human INSR
Host	Rabbit
Isotype	IgG
Purification	Affinity purification
Buffer	Phosphate buffered solution, pH 7.4, containing 0.05% stabilizer and 50% glycerol.

Applications

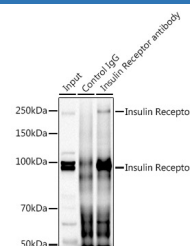
Applications	Recommended Dilution
WB	1:500-1:2000
IP	1:50-1:200

Data



Western blot analysis of extracts of various cell lines using Insulin Receptor Polyclonal Antibody at 1:3000 dilution.

Observed-MW:110 kDa/220 kDa
Calculated-MW:155 kDa/156 kDa



Immunoprecipitation analysis of 300ug extracts of HeLa cells using 3ug Insulin Receptor Polyclonal Antibody. Western blot was performed from the immunoprecipitate using Insulin Receptor at a dilution of 1:1000.

Observed-MW:110 kDa/220 kDa
Calculated-MW:155 kDa/156 kDa

Preparation & Storage

Storage	Store at -20°C Valid for 12 months. Avoid freeze / thaw cycles.
Shipping	The product is shipped with ice pack, upon receipt, store it immediately at the temperature recommended.

Background

This gene encodes a member of the receptor tyrosine kinase family of proteins. The encoded preproprotein is proteolytically processed to generate alpha and beta subunits that form a heterotetrameric receptor. Binding of insulin or other ligands to this receptor activates the insulin signaling pathway, which regulates glucose uptake and release, as well as the synthesis and storage of carbohydrates, lipids and protein. Mutations in this gene underlie the inherited severe insulin resistance syndromes including type A insulin resistance syndrome, Donohue syndrome and Rabson-Mendenhall syndrome. Alternative splicing results in multiple transcript variants.

For Research Use Only