

AIF1 Polyclonal Antibody

catalog number: **E-AB-10382**

Note: Centrifuge before opening to ensure complete recovery of vial contents.

Description

Reactivity	Human;Mouse;Rat
Immunogen	Recombinant protein of human AIF1
Host	Rabbit
Isotype	IgG
Purification	Affinity purification
Buffer	Phosphate buffered solution, pH 7.4, containing 0.05% stabilizer and 50% glycerol.

Applications

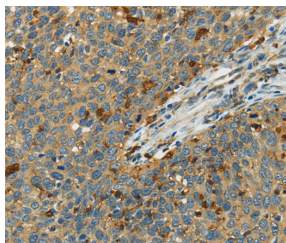
Applications	Recommended Dilution
WB	1:200-1:1000
IHC	1:50-1:200

Data

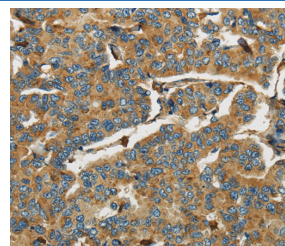


Western Blot analysis of Mouse kidney tissue using AIF1 Polyclonal Antibody at dilution of 1:500

Calculated-MV:17 kDa



Immunohistochemistry of paraffin-embedded Human breast cancer using AIF1 Polyclonal Antibody at dilution of 1:40



Immunohistochemistry of paraffin-embedded Human cervical cancer using AIF1 Polyclonal Antibody at dilution of 1:40

Preparation & Storage

Storage	Store at -20°C Valid for 12 months. Avoid freeze / thaw cycles.
Shipping	The product is shipped with ice pack, upon receipt, store it immediately at the temperature recommended.

Background

For Research Use Only

This gene is induced by cytokines and interferon. Its protein product is thought to be involved in negative regulation of growth of vascular smooth muscle cells, which contributes to the anti-inflammatory response to vessel wall trauma. Three transcript variants encoding different isoforms have been found for this gene. Actin-binding protein that enhances membrane ruffling and RAC activation. Enhances the actin-bundling activity of LCPI. Binds calcium. Plays a role in RAC signaling and in phagocytosis. May play a role in macrophage activation and function. Promotes the proliferation of vascular smooth muscle cells and of T-lymphocytes. Enhances lymphocyte migration. Plays a role in vascular inflammation.

For Research Use Only

Toll-free: 1-888-852-8623
Web: www.elabscience.com

Tel: 1-832-243-6086
Email: techsupport@elabscience.com

Fax: 1-832-243-6017

Rev. V1.7