

AKT1S1 Polyclonal Antibody

catalog number: E-AB-67741

Note: Centrifuge before opening to ensure complete recovery of vial contents.

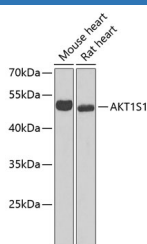
Description

Reactivity	Human;Mouse;Rat
Immunogen	Recombinant fusion protein of human AKT1S1 (NP_115751.3).
Host	Rabbit
Isotype	IgG
Purification	Affinity purification
Buffer	Phosphate buffered solution, pH 7.4, containing 0.05% stabilizer and 50% glycerol.

Applications

Applications	Recommended Dilution
WB	1:500-1:2000
IHC	1:50-1:100
IF	1:50-1:100

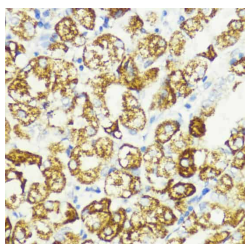
Data



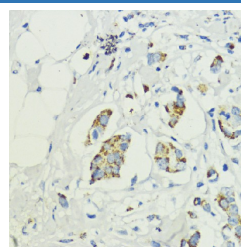
Western blot analysis of extracts of various cell lines using AKT1S1 Polyclonal Antibody at dilution of 1:1000.

Observed-MV:50 kDa

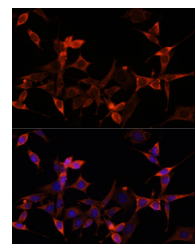
Calculated-MV:13 kDa/27 kDa/29 kDa



Immunohistochemistry of paraffin-embedded Human stomach using AKT1S1 Polyclonal Antibody at dilution of 1:200 (40x lens).



Immunohistochemistry of paraffin-embedded Human mammary cancer using AKT1S1 Polyclonal Antibody at dilution of 1:200 (40x lens).



Immunofluorescence analysis of NIH-3T3 cells using AKT1S1 Polyclonal Antibody at dilution of 1:100 (40x lens).
Blue: DAPI for nuclear staining.

Preparation & Storage

Storage	Store at -20°C Valid for 12 months. Avoid freeze / thaw cycles.
Shipping	The product is shipped with ice pack, upon receipt, store it immediately at the temperature recommended.

Background

For Research Use Only

AKT1S1 (AKT1 Substrate 1) is a Protein Coding gene. Diseases associated with AKT1S1 include Localized Pulmonary Fibrosis and Tuberous Sclerosis 1. Among its related pathways are RET signaling and Respiratory electron transport, ATP synthesis by chemiosmotic coupling, and heat production by uncoupling proteins.